

MANCHESTER

BID TO HOST THE

2019 CONGRESS OF THE ISFG

INTERNATIONAL SOCIETY FOR FORENSIC GENETICS



MANCHESTER
EUROPEAN CITY
OF SCIENCE

Contents

Overview	3	Professional Conference Management	24
Welcome	4	Professional Conference Organisation – Conference Partners	25
Executive Summary	5	Project Implementation	26
Local Organising Committee	7	Outline Budget	27
Manchester: In the Business of Health	8	Registration Fees	27
A Globally Accessible City	10	Accommodation	31
Getting to Manchester	11	Hotel Infrastructure	32
International Accessibility	12	Suggested Headquarter Hotels	33
Getting Around Manchester	13	 	
 		An Attractive Destination	34
Support	14	Welcome to Manchester	35
Letters of Support	15	Attractions, Activities and Excursions	37
City Support	17	Social Programme	38
Experience of Hosting International Meetings	18	 	
 		Contact Us	39
Congress Venue	19		
Manchester Central	20		
Venue Overview	21		
Venue Floorplan	22		
Additional Information	23		

This bid is presented by a partnership organisation with the shared commitment to deliver a successful Congress of the ISFG in Manchester in 2019.

Bid submitted on April 1st 2015.

University of
HUDDERSFIELD


University of Central Lancashire

 **LGC** Forensics


Home Office

GREATER MANCHESTER
POLICE 

conference
partners 
UK

Marketing
Manchester®
part of MGC 


**Manchester
Central**

 **MANCHESTER**
CITY COUNCIL


VisitEngland®

Overview



From the discovery of the structure of DNA to the inception of DNA profiling, some of the biggest breakthroughs in genetics has taken place here in the United Kingdom. The time is ripe for the forensic genetics community to return to the birthplace of DNA profiling and share in and celebrate recent achievements in forensic genetics research.



Dr Graham Williams
Senior Lecturer in Forensic Genetics, University of Huddersfield

It is our pleasure to present a bid to host the Congress of the International Society for Forensic Genetics in 2019.

Manchester has grown from the first industrial city and the home of the first 'test-tube' baby, to be the central hub of the "Powerhouse of the North" of England - a thriving, modern, knowledge-based city amongst the top European locations for science, healthcare, education, business and leisure.

We believe we have the capability, experience and desire to host this incredibly exciting congress and exceed all the event objectives.



A Heritage of Expertise in Genetics

From the discovery of the structure of DNA to the inception of DNA profiling, some of the biggest breakthroughs in genetics have taken place here in the United Kingdom.

For a long time, the UK has led the way in forensic genetics innovation, including the establishment of the world's first National DNA Database, the first use of Short Tandem Repeat analysis, developing the preferential extraction of semen, and automation. In addition, the UK's Forensic Science Service had produced seminal papers on resolving mixtures of DNA and the use of the Hierarchy of Propositions in forensic case work.

Since the demise of the Forensic Science Service, forensic genetics research in the UK has dwindled, despite the efforts of a very small number of research groups. By hosting the World Congress of the ISFG in the United Kingdom, it is hoped that such an influx of world renowned experts will simulate research in this discipline.

ISFG is Invited

The time is ripe for the forensic genetics community to return to the birthplace of DNA profiling and share in and celebrate recent achievements in forensic genetics research.

ISFG is guaranteed to be welcomed, inspired and assured that Manchester is more than just a conference destination; Manchester is a modern city that is dynamic, welcoming and energetic.

From connectivity to culture, science to sport, Manchester has all of facilities available to make an outstanding international conference and to enlighten, educate and entertain delegates in 2019

We look forward to welcoming you to Manchester.

Dr Graham Williams

Chair of Bidding Committee



Executive Summary

Suggested Dates

Monday 2nd to Saturday 7th September 2019

Location

Ideally located in the centre of England, Manchester benefits from excellent road, rail and air links. Manchester Airport is the North's only global gateway, with services to over 200 worldwide destinations nonstop.

Our central position on the UK rail and road networks makes it easy to get to Manchester, with 60 trains a day connecting Manchester to London in 2 hours.

Manchester city centre is incredibly compact; your attendees will be able to walk from one side of the city to the other in under twenty minutes allowing them to feel part of the conference even in their hotel, whilst still able to explore all that the city has to offer with ease. The city's free Metroshuttle bus system and Metrolink trams also provide a fast and efficient way to navigate the city centre.

World Class Facilities

Manchester will provide the ideal back-drop for ISFG. At the heart of the city you'll find Petersfield - the dedicated conference quarter which houses Manchester Central offering world class conference, exhibition and meeting facilities, surrounded by an array of hotels providing over 2,500 hotel rooms within a five minute walk.

Large Choice of Accommodation

Part of Manchester's attractiveness to visitors as a conference destination is its array of high quality, value for money accommodation. Whether you prefer five or four star luxury with access to spas, ultra-modern chic rooms, an apartment, or budget accommodation, rest assured that Manchester can cater for your needs. By 2017 there will be over 10,000 bedrooms in Manchester's city centre.

Organisation

Our chosen PCO is **Conference Partners** - a longstanding professional conference management organisation with over 50 experienced professionals.

Financially Sound

The LOC has prepared a **robust conference budget** which captures variable and fixed costs and models different scenarios in terms of delegate numbers and registration fee categories. Every effort has been made to ensure a **low registration fee** for all participants. We have proposed different fees for members, non-members and students, as well as early-bird and late registration fees which provide an incentive to register early.

Sponsorship

The City of Manchester has offered an in-principal award of **£12,000.00 in civic funding** towards the ISFG Congress. We have extensive experience in securing commercial sponsorship from a wider range of sponsors – including contacts within industry, societies, grant-giving organisations and government agencies.

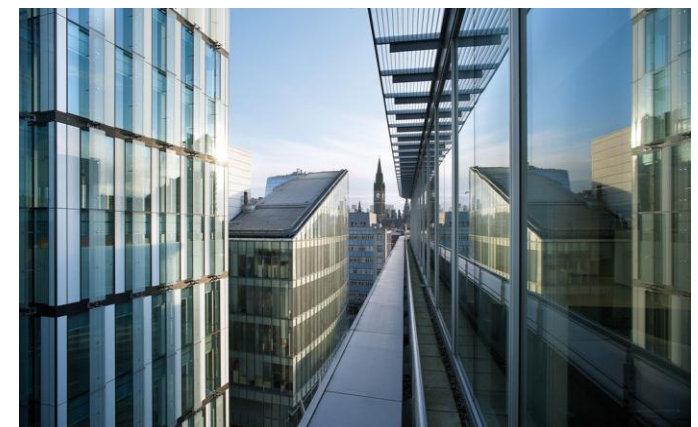
Promotion

We will ensure the development of a strong, visually recognisable brand combined with strong scientific messaging on programme content and specific themes.

We will adopt traditional and non-traditional methods of marketing which include social networking sites, viral marketing campaigns and more traditional direct mailing and promotion through events, publications and databases.

A Safe and Secure Congress

The UK is renowned as one of the safest countries to travel to within Europe. Manchester has a long and proud tradition of delivering safe and secure events.



Experienced hosts

This bid is enthusiastically supported by a strong partnership of organisations which are committed to a highly successful congress in the UK.

Recently announced as **European City of Science**, Manchester is firmly established as a leading international conference destination with an impressive track record of hosting major scientific meetings.

In 2016 the city will host the 'Euroscience Open Forum' – the largest general science symposium in Europe as well as other prestigious international meetings such as the Congress of the European Association for Cancer Research and the International Symposium on Medicinal Chemistry.



The University of Huddersfield's Department of Chemical and Forensic Sciences is a vibrant atmosphere for forensic research and teaching. Research strengths include areas of forensic genetics and entomology.



The University of Central Lancashire's Forensic Genetics Group uses dedicated laboratories with the latest equipment to develop high quality research and forge productive links with international organisations such as the International Committee of the Red Cross, overseas research institutes and other forensic providers.



LGC is a world leader in forensic science and the UK leading full service forensics provider. We work with police forces in the UK and internationally to assist with overseas investigations, government and private organisations throughout the world. We have a wealth of experience to ensure that the truth is unveiled, for a safer world.



The National DNA Database Ethics Group is an advisory non-departmental public body, sponsored by the Home Office. It was established to provide independent advice on ethical issues surrounding the operations of the National DNA Database to Home Office ministers and the National DNA Database Strategy Board.



Greater Manchester Police is the Police Force responsible for law enforcement within Greater Manchester. Formed in 1974, GMP is split into 12 divisions serving more than 2.5 million people and covering an area of 500 square miles.



Conference Partners is a multi-award winning and internationally accredited Professional Conference Organiser and Association Management Company.



Marketing Manchester is the agency charged with the promotion of Manchester on a national and international stage. It incorporates **Visit Manchester** – the official tourist board and convention bureau for Greater Manchester.



Manchester Central is an award-winning globally renowned convention venue in the heart of Manchester's city centre.



Manchester City Council is the local government authority for the city and metropolitan borough of Manchester.



Visit England is the national tourism agency for England

Local Organising Committee

7

A Local Organising Committee has been assembled which includes the following lead contacts. We envisage that this group will be added to over time, including further specialists in the field based in the UK, each with particular strengths and experience in organising international meetings.

Dr Graham Williams

University of Huddersfield



Role

- Course Leader - Postgraduate Forensic Sciences
- Associate Director - Secure Societies Institute
- Chair - Applied Sciences Ethics Committee (SREP)
- Chair - Human Tissues Committee

Professional Memberships

- Member of the International Society of Forensic Genetics
- Professional Member of the Forensic Science Society
- Member of the Home Office Centre for Applied Sciences and Technology DNA Expert Community
- Member of the International Association of Bloodstain Pattern Analysts (IABPA)
- Member of the Society of Biology
- Chartered Biologist
- Fellow of the Higher Education Academy

Biography

Graham Williams gained a BSc (Hons) in Physiology from the University of Leeds before going on to complete an MSc in Neurosciences at King's College London and receive his PhD from the University of Huddersfield. He has extensive experience, having worked Weatherall Institute of Molecular Medicine at the University of Oxford before becoming a Forensic Biologist for the London laboratory of the Forensic Science. Since 2007, Graham has been a Lecturer in Forensic Science at Huddersfield.

In his professional capacity, Graham has extensive publications and conference presentations and also acts as a Consultant Forensic Biologist for a number of organisations.

Dr Judith Smith

University of Central Lancashire



Role

- Senior Lecturer in Forensic Genetics
- Course Leader - BSc (Hons) Forensic Biology
- Course Leader - BSc (Hons) Forensic Science with Anthropology
- Course Leader - MSci Forensic Science

Professional Memberships

- Member of the International Society for Forensic Genetics
- Member of the Genetics Society
- Member of the Royal Entomological Society
- Member of the British Ecological Society

Biography

Judith has a diverse background in molecular genetics ranging from population genetics, gene mapping and developmental biology. Her PhD research investigated the impact of parasitism and reproductive success on the population genetics of Soay sheep on the remote Scottish islands of St Kilda. Since then she has carried out post-doctoral research at the Roslin Institute, Edinburgh (Genetic variation in production traits in cattle), the University of Glasgow (Population genetics and the genetic control of nematode development) and Lancaster University (Insect molecular genetics).

She was appointed to the School of Forensic and Investigative Sciences in January 2006 where she teaches molecular genetics and its application in forensic DNA profiling. Her research interests are in the application of molecular biology in Forensic Entomology, Molecular Ecology and Wildlife Forensics.

Dr Tim Clayton

LGC Forensics



Role

- Senior Biologist

Professional Memberships

- Member of the International Society of Forensic Genetics
- Member of Chartered Society for Forensic Sciences
- Member of the Advisory Committee of the Nederlands Register Gerechtelijk Deskundigen (NRGD)

Biography

Dr Clayton had an extensive career at the Forensic Science Service spanning over 20 years. As Principal Scientist, he was in charge of the implementation of first DNA STR profiling unit in the world. During this time he was responsible for providing expert scientific services to Law Enforcement Agencies, the Defence and private sector customers. Consequently, Dr Clayton has provided evidence to the Court of Criminal Appeal in a number of high profile cases.

Dr Clayton has published scientific papers in peer reviewed journals in the area of DNA and forensic science and co-authored of a number of chapters in a mainstream forensic textbooks. He has also created and for the past 10 years administered the National Missing Persons DNA Database. In conjunction with others, he developed a number of computer software packages to assist forensic scientists in the statistical analysis of DNA profiles. He is an experienced training instructor to local and overseas forensic scientists, senior police officers, National Scientific Support Managers as well as the Crown Prosecution Service.

With strong partnerships across a host of biotech clusters and world-class universities, Manchester is proving itself to be a place where cutting-edge medical innovation is right at home.

Manchester is synonymous with innovation. From the industrial revolution, the splitting of the atom, the first modern computer, the first hip replacement, to the first test tube baby and the discovery of Graphene – Manchester is a city of medical and technology pioneers.

The city's ability to attract the brightest scientific minds, both in business and academia, has helped the region to attract over 250 biotechnology companies. Home to five world class universities who have a strong track record with working with industry on biotechnological projects, Manchester provides a climate where innovation can grow and prosper.



As a member of the European Super League of biomedical clusters, and the current **European City of Science**, Manchester offers not just low costs and excellent international connectivity but also unique gateway organisations and support systems to help companies gain an important foothold in the National Health Service (NHS). With over 30 NHS organisations, Manchester has a significant proportion of the UK National Health Service market with a population of 11 million within a one hour drive.

Working together to deliver Innovation

As a location for top global pharmaceutical, medtech and biotech companies, Manchester has a proven track record in establishing partnerships between industry, academia and NHS. Whilst Manchester has tremendous breadth and depth of clinical and academic excellence, it has recognised that the key challenge for business is gaining access to the market and ensuring that innovation that can meet unmet medical needs is adopted by the market.

As a result, the city has developed a unique combination of gateway organisations that are focused on unmet medical needs, but also prepared to collaborate with and support industry to meet these needs. These organisations include the Manchester Academic Health Science Centre (MAHSC), Manchester Integrating Medicine and Innovative Technology (MIMIT), and University of Manchester Intellectual Property, TrusTech and Northwest EHealth. These organisations provide invaluable support to businesses, helping them to deliver innovation with pace and scale.

The region also benefits from the Manchester Academic Health Science Network, a Department of Health designated centre. The network encompasses the key NHS institutions responsible for innovation.



A 'Corridor' of innovation

Manchester boasts a dedicated biomedical corridor. 'The Corridor' is home to a wealth of knowledge intensive organisations and businesses that operate in the area of biomedical, pharmaceuticals, clinical trials, medical devices and oncology related healthcare. Its facilities are state-of-the-art, which include the internationally renowned Manchester Science Park and Citylabs, Manchester's biomedical centre of excellence.

The corridor is also the location of **Europe's largest clinical academic campus**, the University of Manchester, Manchester Metropolitan University and the hospitals of the Central Manchester Foundation Trust. This unique environment offers businesses the ability to be closely co-located with academia, gateway organisations and NHS, which enables an accelerated delivery of innovation.

Vibrant centre for the life science Industry

The region is the largest producer of pharmaceuticals in the UK and is **home to over 250 core biomedical companies** who employ over 20,000 people. There is a rich supply chain for these companies providing a complete ecosystem to support business growth. The city also houses the largest cancer research and treatment centre in Europe, the UK's largest children's hospital and a leading centre for genomic medicine.

Companies with a presence in the region include: **Qiagen**, **Thermo Fisher Scientific**, AstraZeneca, Waters Corporation, Bristol Myers Squibb, Eli Lilly, GlaxoSmith-Kline, Medimmune, Novartis, Sanofi, Teva, Shimadzu, Molnlycke, Baxter, Terumo, and Hologic Genprobe.



Talent supporting growth

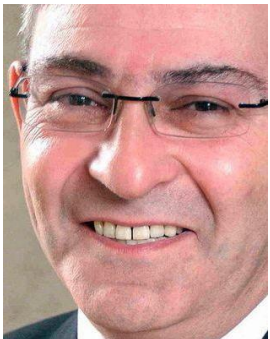
The NHS and universities in Manchester are intermeshed. The city draws on an incredible talent pool, with five leading universities located here. The University of Manchester is one of the largest and most accomplished in the world, with more than 6,000 biotech and medical graduates per year, a figure that increases to over 25,000 when including graduates from the twenty-two universities within an hour of the city centre.

A leader in digital health

Manchester has a vibrant and innovative technology community, with the city recognised as a leader in digital health. The city is one of only four Health eResearch Centres that make up the UK's Farr Institute. The region is also home to England's only e-enabled health trust, and Europe's flagship mHealth ecosystem, as classified by the European Connected healthcare Alliance. The eco-system enables accelerated adoption of digital and eHealth solutions in health and social care in the city.



A Globally Accessible City



Manchester offers an excellent conference location, with first class conference facilities complemented by a range of high quality, four and five star hotels. The city centre is no more than a twenty minute journey by rail or road from Manchester Airport, which offers direct connections to all major European destinations as well as daily flights to international destinations including the USA, Hong Kong and the Middle East.

Sir Howard Bernstein
Chief Executive, Manchester City Council



Image: Airport City and Manchester MediPark will provide an opportunity to attract high-value, creative and knowledge-intensive life sciences and healthcare related businesses in a unique enterprise zone at Manchester Airport.

Getting to Manchester

11

Manchester is an international destination with an infrastructure comparable to any city in Europe, hence it has become a natural choice for the organisers of international association conferences.

The city has a world class airport and a strategic location in relation to Britain's motorway and rail network. In addition, the huge investment made in public transport in recent years makes Manchester perfectly equipped to provide fast and efficient transport for delegates attending the congress.

AIR

With over 200 non-stop flight routes, Manchester Airport boasts one of the most comprehensive international route networks of any UK airport. It offers direct flights from nearly every major European city including Brussels, Paris, Frankfurt and Amsterdam, as well as a large number of international destinations including Chicago, New York, Philadelphia, Washington DC, Dubai, Hong Kong and Singapore.

Manchester Airport also offers a large number of European routes with low-cost carriers which will benefit student delegates who are travelling on a budget.

The airport is situated just 10 miles from Manchester and is connected by a fast and frequent train service meaning that delegates from overseas can reach the city centre very quickly.

Airport to city centre by train:

10 miles / 15 minutes
£3.50 (€4.83 / \$5.14)

Airport to city centre by taxi:

10 miles / 20-25 minutes
£20.00 (€27.60 / \$29.40)

RAIL

The UK is very well connected to Europe which will be a particular benefit to delegates and exhibiting partners. The Eurostar link serves London's St Pancras Station with trains arriving many times each day from France and Belgium, and there are excellent connections to the UK national rail network and to Manchester.

Manchester Piccadilly is one of three main stations in Manchester and offers direct services to other major UK cities. There are 60 direct trains a day to London (every 20 minutes), with a journey time of just over two hours.

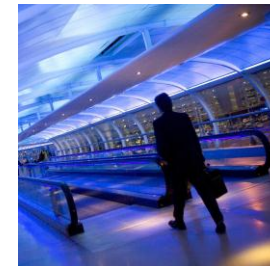
ROAD

Travelling to Manchester by road is simple and efficient with half of Britain's motorway network passing through the region with approximate journey times of 2 hours to Birmingham, 3½ hours to London and 4 hours to Edinburgh by car, allowing easy access from across the UK.



200+

**Non-stop
flights routes
globally**



**10
miles**
from airport to
city centre

**2 hours
to London
by train**



**60 trains
a day and
220
flights a week to
London**

EUROPE

Alicante, Spain (ALC)
Almeria, Spain (LEI)
Amsterdam, Netherlands (AMS)
Antalya, Turkey (AYT)
Athens, Greece (ATH)
Avignon, France (AVN)
Barcelona, Spain (BCN)
Basel, Switzerland (BSL)
Bastia, France (BIA)
Beauvais, France (BVA)
Bergen, Norway (BGO)
Bergerac, France (EGC)
Berlin, Germany (SXF)
Berlin, Germany (BER)
Beziers, France (BZR)
Biarritz, France (BIQ)
Bilbao, Spain (BIO)
Billund, Denmark (BLL)
Boa Vista, Cape Verde (BVC)
Bodrum, Turkey (BJV)
Bologna, Italy (BLQ)
Bourgas, Bulgaria (BOJ)
Bremen, Germany (BRE)
Brescia, Italy (VBS)
Brest, France (BES)
Brussels, Belgium (BRU)
Budapest, Hungary (BUD)
Cagliari, Italy (CAG)
Calvi, France (CLY)
Chambery, France (CMF)
Catania, Italy (CTA)
Cologne, Germany (CGN)
Copenhagen, Denmark (CPH)

Corfu, Greece (CFU)
Cork, Ireland (ORK)
Dalaman, Turkey (DLM)
Dordogne – Bergerac, France (EGC)
Dordogne - Brive, France (BVE)
Dublin, Ireland (DUB)
Dubrovnik, Croatia (DBV)
Dusseldorf, Germany (DUS)
Ercan, Cyprus (ECN)
Faro, Sweden (FAO)
Figari, France (FSC)
Frankfurt, Germany (FRA)
Friedrichshafen, Germany (FDH)
Fuerteventura, Spain (FUE)
Funchal, Portugal (FNC)
Gdansk, Poland (GDN)
Geneva, Switzerland (GVA)
Gibraltar, United Kingdom (GIB)
Girona, Spain (GRO)
Gothenburg, Sweden (GOT)
Gran Canaria, Spain (LPA)
Grenoble, France (GNB)
Hamburg, Germany (HAM)
Hanover, Germany (HAJ)
Helsinki, Finland (HEL)
Heraklion, Greece (HER)
Ibiza, Spain (IBZ)
Ilha Do Sal, Cape Verde (SID)
Innsbruck, Austria (INN)
Istanbul, Turkey (IST)
Ivalo, Finland (IVL)
Izmir, Turkey (ADB)
Kalamata, Greece (KLX)
Katowice, Poland (KTW)
Kavala, Greece (KVA)

Kefalonia, Greece (EFL)
Kittila, Finland (KTT)
Knock, Ireland (NOC)
Kos, Greece (KGS)
Krakow, Poland (KRK)
La Palma, Spain (SPC)
La Rochelle, France (LRH)
Lanzarote, Spain (ACE)
Larnaca, Cyprus (LCA)
Limoges, France (LIG)
Lisbon, Portugal (LIS)
Ljubljana, Slovenia (LJU)
Lourdes, France (LDE)
Lyon, France (LYS)
Madrid, Spain (MAD)
Mahon, Menorca (MAH)
Malaga, Spain (AGP)
Malta, Malta (MLA)
Milan, Italy (BGY)
Milan Malpensa, Italy (MXP)
Minsk, Belarus (MSQ)
Montpellier, France (MPL)
Moscow, Russia (DME)
Munich, Germany (MUC)
Murcia, Spain (MJV)
Mykonos, Greece (JMK)
Mytilene, Greece (MJT)
Nantes, France (NTE)
Naples, Italy (NAP)
Nice, France (NCE)
Olbia, Italy (OLB)
Oslo, Norway (OSL)
Ostersund, Sweden (OSD)
Palma, Majorca, Spain (PMI)
Paris, France (CDG)

Paris, France (BVA)
Perpignan, France (PGF)
Pisa, Italy (PSA)
Ponta Delgada, Portugal (PDL)
Prague, Czech Republic (PRG)
Preveza, Greece (PVK)
Pula, Croatia (PUY)
Rennes, France (RNS)
Reus, Spain (REU)
Reykjavik, Iceland (KEF)
Rhodes, Greece (RHO)
Riga, Latvia (RIX)
Rome Fiumicino, Italy (FCO)
Zurich, Switzerland (ZRH)
Madrid, Spain (CIA)
Rovaniemi, Finland (RVN)
Rzeszow, Poland (RZE)
Salzburg, Austria (SZG)
Santorini, Greece (JTR)
Shannon, Ireland (SNN)
Sicily, Italy (CTA)
Skiathos, Greece (JSI)
Sofia, Bulgaria (SOF)
Split, Croatia (SPU)
Stavanger, Norway (SVG)
Stockholm, Sweden (ARN)
Tallinn, Estonia (TLL)
Tenerife, Spain (TFS)
Thessalonika, Greece (SKG)
Toulouse, France (TLS)
Tours, France (TUF)
Trapani, Italy (TPS)
Turin, Italy (TRN)
Valencia, Spain (VLC)
Varna, Bulgaria (VAR)

Venice, Italy (VCE)
Verona, Italy (VRN)
Vienna, Austria (VIE)
Warsaw, Poland (WAW)
Waterford, Ireland (WAT)
Zadar, Croatia (ZAD)
Zakynthos, Greece (ZTH)

AFRICA

Agadir, Morocco (AGA)
Banjul, The Gambia (BJL)
Cairo, Egypt (CAI)
Djerba, Tunisia (DJE)
Enfidha, Tunisia (NBE)
Hurghada, Egypt (HRG)
Luxor, Egypt (LXR)
Marrakech, Morocco (RAK)
Marsa Alam, Egypt (RMF)
Mombassa, Kenya (MBA)
Monastir, Tunisia (MIR)
Sharm el Sheikh, Egypt (SSH)
Taba, Egypt (TCP)
Tunis, Tunisia (TUN)

ASIA PACIFIC

Goa, India (GOI)
Hong Kong, Hong Kong (HKG)
Islamabad, Pakistan (ISB)
Lahore, Pakistan (LHE)
Singapore, Singapore (SIN)

CENTRAL & SOUTH AMERICA

Antigua (ANU)
Barbados (BGI)
Bridgetown, Barbados (BGI)
Cancun, Mexico (CUN)
Cayo Coco, Cuba (CCC)
Holguin, Cuba (HOG)
Jardines del Rey, Cuba (CCC)
Montego Bay, Jamaica (MBJ)
Puerto Plata, Dominican Republic (POP)
Punta Cana, Dominican Republic (PUJ)
Santa Clara, Cuba (SNU)
St Lucia (UVF)
Varadero, Cuba (VRA)

MIDDLE EAST

Abu Dhabi, United Arab Emirates (AUH)
Doha, Qatar (DOH)
Dubai, United Arab Emirates (DXB)
Jeddah, Saudi Arabia (JED)
Ovda, Israel (VDA)
Tel Aviv, Israel (TLV)

NORTH AMERICA

Atlanta, USA (ATL)
Calgary, Canada (YYC)
Charlotte, USA (CLT)
Chicago, USA (ORD)
Las Vegas, USA (LAS)
Miami, USA (MIA)
New York JFK, USA (JFK)
New York Newark, USA (EWR)
Orlando Int., USA (MCO)
Philadelphia, USA (PHL)
Toronto, Canada (YYZ)
Vancouver, Canada (YVR)
Washington DC, USA (IAD)

UNITED KINGDOM

Aberdeen, Scotland (ABZ)
Belfast City Airport, N.Ireland (BHD)
Belfast International, N.Ireland (BFS)
Edinburgh, Scotland (EDI)
Exeter, England (EXT)
Glasgow, Scotland (GLA)
Guernsey (GCI)
Inverness, Scotland (INV)
Isle of Man (IOM)
Jersey (JER)
London Heathrow, England (LHR)
Newquay, England (NQY)
Norwich, England (NWI)
Southampton, England (SOU)

AVERAGE FLIGHT COSTS TO MANCHESTER

			
Europe	£124.00	€171.12	\$182.28
Western North America	£789.00	€1,088.82	\$1,159.83
Eastern North America	£718.00	€990.84	\$2,760.41
Central North America	£767.00	€1,058.46	\$1,127.49
Australasia	£1543.00	€2,129.34	\$2,268.21

Flights are based on the average cost of a return trip to Manchester from a selection of cities. Flight data was taken from expedia.com and is based on travel during the same dates in 2014. Currency conversion based on £1.00 = €1.38 = \$1.47.

PASSPORT & VISA REQUIREMENTS

We predict that many delegates attending will not require a visa to enter the UK for this conference.

Delegates from outside the European Union usually need to apply for a visa to enter the UK. The local partners are happy to provide assistance in obtaining visas for those cases where a written letter of invitation is required.



Getting Around Manchester

13

Each of the suggested conference venues are located in Manchester's city centre, surrounded by thousands of hotel bedrooms as well as the city's attractions, bars and shops. This gives delegates extra time to enjoy the congress programme and network with colleagues.

Walking

Manchester city centre has a wide offer of high quality public realm which, combined with its compact and manageable size, makes it an easy place to traverse on foot.

Tram

The Metrolink tram network is the largest urban tram network in the UK, consisting of multiple lines bringing passengers into the heart of Manchester city centre. This gives delegates the opportunity to easily visit further afield should they wish.

Metroshuttle – Free Bus

Delegates will benefit from a free city centre bus service known as Metroshuttle, which offers three circular routes covering all of the main areas. Metroshuttle operates with a frequency of about every 5 minutes on Service 1 (orange), every 10 minutes on Service 2 (green) and every 10 minutes on Service 3 (purple). Metroshuttle links all city centre railway stations, the main car parks, and many bus and Metrolink tram stops.

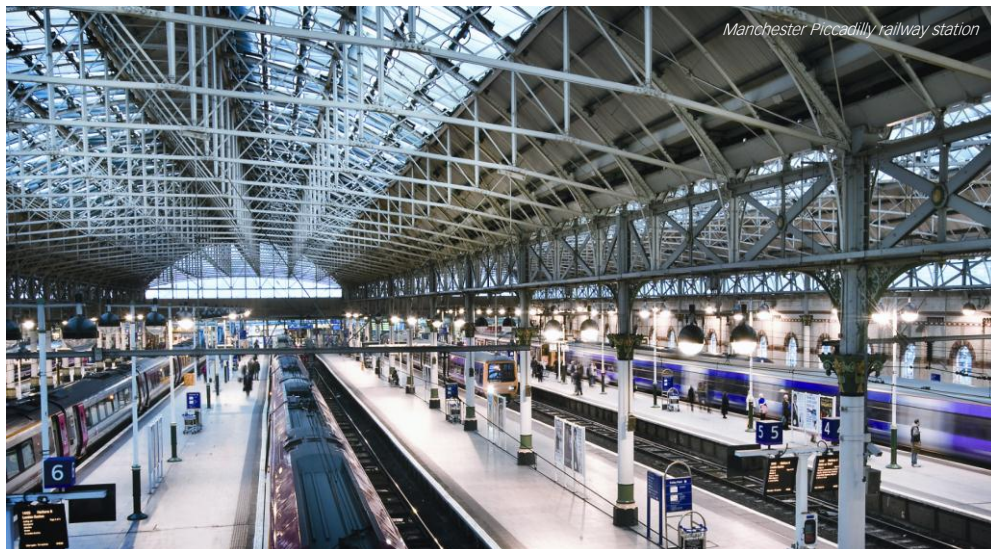
Bus Network

An extensive bus network is operated by various commercial operators. It offers high levels of connectivity and value for money for passengers with services operating into the night.

Road

For those travelling by car, access in and around the city is enhanced by a series of radial roads to all surrounding boroughs. The city centre offers over 15,000 secure car parking spaces.

Manchester is well served by a large number of taxi operators.



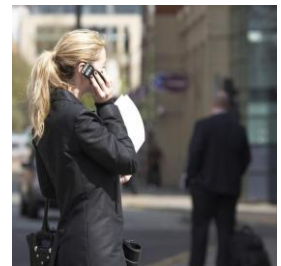
Manchester Piccadilly railway station

City
centre
venue



Free
bus
system

Walkable
City



Hotels &
attractions
nearby

Support



Manchester has harnessed its awesome and well-practiced powers of partnership to rise to the challenge of redesigning the city centre in a programme of multi-million pound improvements. Emerging is a city with all of the style, flair and facilities of a major European centre and all of the warmth that has made Manchester famous for centuries.



Councillor Susan Cooley
Lord Mayor of Manchester

Image: Located in Albert Square, **Manchester Town Hall** is one of the most iconic landmarks in the city. It is a Grade II listed building in a magnificent setting, steeped in a wealth of history and definitely a jewel in Manchester's crown.



Ian Wiggett
Assistant Chief Constable
Serious Crime and Counter Terrorism



Executive Committee of the
International Society of Forensic Genetics

Our Ref: IW/AMD
Your Ref:
31st March 2015

Dear Members of the Executive Committee

INTERNATIONAL FORENSIC GENETICS CONFERENCE

I understand that you are considering locations for your Congress in 2019. As the senior officer responsible for Major Crime and Counter Terrorism investigations in Greater Manchester, I would be very welcome to see this event hosted in Manchester.

As one of the largest Police Forces within the United Kingdom, Greater Manchester Police has a long and successful record of tackling the most serious and difficult of crime threats and clearly we see Forensic Science as being at the heart of our capability.

We have been closely involved in the application and development of Forensic Science initiatives, both in relation to volume offences and the most serious of crime, this is inclusive of terrorist attacks, planned murders and firearms discharges as well as new fields of Forensic Science through examination of technology.

Clearly, Manchester as a major city, has a world-wide reputation for organising major events, including in recent history, Olympic and Commonwealth Games, international football finals and World Cup finals.

From the policing perspective we have long established links with many Forces around the world providing training and exchange opportunities to ensure that our knowledge remains current and that we can continue to be active participants of new capabilities.

From a professional policing viewpoint, I would be very keen to see such a prestigious Congress taking place in Manchester and would hope that my colleagues would have the opportunity of taking advantage of expertise that will be attending Manchester, were this bid to be successful.

Yours sincerely

Ian Wiggett
Assistant Chief Constable
Serious Crime and Counter Terrorism

Location Address: GMP Force Headquarters, Central Park, Northampton Road, Manchester M40 5BP Tel: 0161 856 2007

Postal Address: Greater Manchester Police, Openshaw Complex, Lawton Street, Openshaw, Manchester M11 2NS



TOWN HALL, MANCHESTER

16 March 2015

Prof. Dr. Peter M. Schneider
Secretary, ISFG
Institut für Rechtsmedizin
Melatengürtel 60/62
50823 Köln
Germany

Dear Professor Schneider

RE: Congress of the International Society for Forensic Genetics 2019

I should like to extend a warm welcome to the International Society for Forensic Genetics on behalf of the City of Manchester.

There has never been a better time to consider holding an event in Manchester as the city witnesses a transformation unprecedented since the beginning of the Industrial Revolution.

Manchester has harnessed its awesome and well-practiced powers of partnership to rise to the challenge of redesigning the city centre in a programme of multi-million pound improvements. Emerging is a city with all of the style, flair and facilities of a major European centre and all of the warmth that has made Manchester famous for centuries.

The University of Manchester along with Manchester Metropolitan University and Salford University places the city at a powerful academic position not only in the UK, but across the world. Deemed as a knowledge capital, Manchester's reputation for teaching and research is the envy of the world.

Manchester has the largest financial, legal and professional community outside of London, add to this unrivalled transport links, an excellent range of hotels and conference venues and you will find that Manchester is the obvious destination for your event.

Yours sincerely

Councillor Susan Cooley
Lord Mayor



SIR HOWARD BERNSTEIN

Chief Executive

Manchester City Council

P.O. Box 532, Town Hall, Albert Square, Manchester M60 2LA

Tel: 0161 234 3006 Fax: 0161 234 3098

18th March 2015

Prof. Dr. Peter M. Schneider
Secretary, ISFG
Institut für Rechtsmedizin
Melatengürtel 60/62
50823 Köln
Germany

Dear Professor Schneider

RE: Congress of the International Society for Forensic Genetics 2019

It is with great pleasure that on behalf of the City of Manchester, I offer my full support to the bid to host the Congress of ISFG in 2019.

Manchester offers an excellent conference location, with first class conference facilities complemented by a range of high quality, four and five star hotels. The city centre is no more than a twenty minute journey by rail or road from Manchester Airport, which offers direct connections to all major European destinations as well as daily flights to international destinations including the USA, Canada and the Middle East.

The regeneration programme which has taken place in Manchester over the last ten years is second to none. This is apparent in the creation of a dynamic infrastructure, supported by both the renovation of existing signature buildings such as Manchester Art Gallery and Manchester Corn Exchange, and the creation of new architectural icons like the Urbis building. Manchester is the physical representation of the evolution of great British cities and many of its buildings make the ideal canvas for special events and functions.

Manchester has welcomed different types of events, from the Commonwealth Games in 2002, to recent international conferences such as the World Congress of Anthropological & Ethnological Sciences and the World Congress on Disaster & Emergency Medicine. In 2016 Manchester will be European City of Science and will host a number of key international meetings such as the Euroscience Open Forum – the largest general science symposium in Europe.

I can assure you that the International Society for Forensic Genetics will receive the same warm reception, excellent standards of service and the full support of Manchester City Council.

Yours Sincerely

Sir Howard Bernstein
Chief Executive

Marketing Manchester

17 March 2015

Prof. Dr. Peter M. Schneider
Secretary, ISFG
Institut für Rechtsmedizin
Melatengürtel 60/62
50823 Köln
Germany

Dear Professor Schneider

RE: Congress of the International Society for Forensic Genetics 2019

I am delighted that Manchester is bidding to host the Congress of the International Society for Forensic Genetics in 2019 and I am confident that Manchester can deliver everything necessary to make your event successful and memorable.

Manchester is an obvious choice for hosting international events. The city has always been famous for its friendliness and warmth and its dedicated conference quarter, which includes an international convention centre and a selection of four and five-star hotels, has contributed to Manchester's well-proven track record of hosting major national and international conferences.

Manchester continues to strengthen its reputation as an international conference destination. The city has hosted prestigious international conferences such as the World Congress of Disaster and Emergency Medicine, the European Medical Writers Association Conference and the International Cystinosis Conference.

Recently declared European City of Science 2016, Manchester will host a number of high-profile international congresses in the coming years, including the International Symposium on Medicinal Chemistry, the Biennial Congress of the European Association of Cancer Research and the Euroscience Open Forum, the largest general science symposium in Europe.

We continue to receive incredible feedback from organisers, presenters and delegates, reinforcing our belief that Manchester is one of the leading European conference destinations.

I should like to extend the offer of assistance from Marketing Manchester, to ensure that your plans run smoothly. Like you, we want your event to be a huge success and we will do all we can to help you achieve this aim.

Yours sincerely

ANDREW STOKES
Chief Executive

Carver's Warehouse, 77 Dale Street, Manchester, M1 2HG

Chief Executive Andrew Stokes

Telephone 0161 237 1010 Fax 0161 228 2960 www.marketingmanchester.com

A company limited by guarantee registered in England no. 319 259 2

experience
englandsnorthwest

Manchester's Partnership Approach

Manchester recognises that excellent events do not just happen; its stakeholders work in partnership to create them. The city's experience of hosting diverse events, from the Commonwealth Games to large scale party political conferences and international association congresses, has provided the experience to collaborate to exceed expectations, achieve ambitions and excite and delight visitors.

Convention Bureau Assistance



Visit Manchester is the official convention bureau for the Greater Manchester region. The organisation has developed strong working relationships with over 400 partners across the city region. Extensive knowledge of Manchester and relationships with the region's best hotels, conference venues, restaurants, bars and service providers, enables Manchester to be able to assist every step of the way.

A number of complimentary support services can be offered, including:

- Expert local knowledge
- Assistance with site inspections
- Accommodation booking (in collaboration with the professional conference organiser)
- Marketing and promotional support
- Partner programmes, excursions and pre-post event tours.
- Venue sourcing
- Attendance at planning and committee meetings
- Delegate welcome and information point
- Advice on city dressing such as banners and signage

Communications Support

Should Manchester be successful in hosting this prestigious congress, the city will commit to work in partnership with all of the event stakeholders in actively marketing and promoting the conference within local networks and through relevant channels including the city's own press and communications offices.

Welcome from the Lord Mayor

We would be delighted to **invite Manchester's Lord Mayor** and/or local dignitaries to address delegates during the conference and officially welcome attendees to our city. There may also be the opportunity for the Lord Mayor to personally welcome VIPs such as Board Members and sponsors.

Financial Support

It is Manchester's desire to support the important work of ISFG, developing certain elements of the programme, achieving the meeting objectives and provide a long-term positive legacy.

The City of Manchester would like to offer an in-principle award of £12,000 in civic funding towards the congress.*

Manchester is proud of its work in medical science and its hope is that, by hosting this congress, Manchester will further build on these strengths. The City looks forward to working with ISFG to discuss some of the innovative projects this award could support.

* Please note that this is subject to a full application being submitted and confirmed by an independent panel. Further information can be supplied on request.

£12,000
Award from
the City of
Manchester*

Sponsorship Support

Manchester shares your expectation of raising high levels of industry sponsorship to support the conference and the important work of the association. The city has a history of delivering successful international conferences that have attracted sponsorship from major global companies as well as local suppliers.

Free City Wi-Fi

Conference participants can keep connected during the congress by accessing free Wi-Fi in a host of city centre locations, including the convention centre, city centre hotels, venues, shopping malls and on the courtesy Metroshuttle busses.

You can access free Wi-Fi across Manchester city centre through the 'FreeBeeMcr' network, providing 30 minutes of browsing per day, plus unlimited access to public information websites is provided, such as to visitmanchester.com.

Support with Air Travel

The Manchester partners would be delighted to work with ISFG to investigate potential airline support, with the objective of providing discounted airfare for participants and complimentary tickets or upgrades for speakers and/or VIP's.

Star Alliance's Convention Plus Programme offers savings of up to 20% on travel within the network, serving 1,160 global airports.

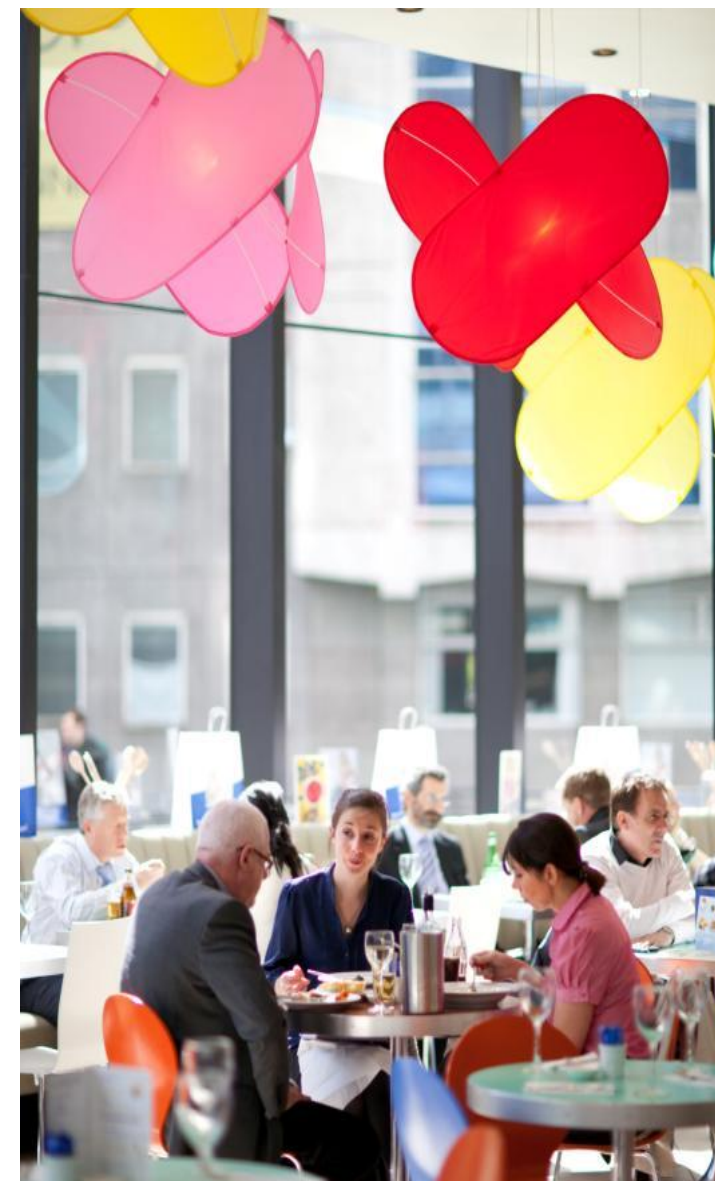


Experience of Organising International Meetings

18

As one of the UK's most dynamic cities, Manchester is a world centre for academic, business, cultural and sporting activity. As such Manchester has played host to many major association conferences and this trend is set to continue. Below is a sample of events held in Manchester over recent years and in the future:

2017+	16 th International Congress of Radiation Research 2019	1,500
	International Federation of Placenta Associations Meeting 2017	500
2016	Euroscience Open Forum – ESOF 2016	4,500
	24 th Biennial Congress of the European Association for Cancer Research	2,000
	24 th International Symposium on Medicinal Chemistry	1,200
	Congress of the European Society for Contact Dermatitis	600
2015	Manchester International Surgical Week 2015	3,000
	6 th World Congress on Ecological Restoration	1,500
	XV International Conference of Forensic Mental Health Services	600
	9 th International Graphene Week	600
	Congress of the European Biological Rhythms Society	500
2014	Microscience Microscopy Congress 2014	2,000
	International Conference on Urban Health 2014	1,000
	Annual Meeting of the Society for Experimental Biology	800
	European Association for Forensic Child & Adolescent Psychology (EFCAP)	500
	8 th International Cystinosis Conference	350
2013	Int. Congress of the History of Science, Technology and Medicine	1,800
	Symposium of the Int. Commission on the History of the Geological Sciences	1,800
	17 th World Congress of the Int. Union of Anthropological & Ethnological Sciences	1,500
	World Congress on Disaster & Emergency Medicine	1,200
2012	European Microscopy Congress	1,500
	8 th International Conference on Frontotemporal Dementia	500
	Congress of the International Society for Paediatric Sleep Disorders	500
	Conference of the International Society for Geriatric Oncology	350
	Conference of the International Association of Breast Cancer Research	300



Congress Venue



Our iconic, globally renowned venue, passionate team of event professionals and vibrant city centre location come together to create a truly unique and inspirational convention centre that provides a stunning back-drop for the world's best conferences, exhibitions and events.



Angie Robinson
Chief Executive, Manchester Central

Image: **Originally a Victorian Railway Station**, the instantly recognisable vaulted arches and station clock have made Manchester Central an iconic feature of the Manchester skyline for over 130 years.

Manchester Central

20

Manchester Central is an award-winning venue in the heart of one of Europe's most vibrant cities.

With the capacity to handle intimate corporate functions and large-scale conferences or exhibitions, its historic architecture and state-of-the-art facilities provide the perfect venue for some of the world's leading events.

Facilities include: the purpose-built 804-seat Exchange Auditorium; the 1,800m² exhibition, conference or 1,200-capacity dining space Exchange Hall; the 10,000m² column-free and divisible Central Hall and a range of smaller state-of-the-art conference and meeting rooms.

Manchester Central's philosophy is simple: provide world class facilities, teams and services. From traffic management to IT and AV support, from dedicated event managers to a hospitality team led by renowned chef Simon Firth MWMCS (Member of the World Master Chefs Society), Manchester Central is one of the most professional and versatile event spaces in the UK.

Manchester Central has an enviable track record of hosting a wide range of tailor-made events, from intimate corporate meetings to large-scale, high profile international congresses and exhibitions. From political and association conferences to testimonial dinners, trade shows and corporate meetings, Manchester Central has the flexibility of space to meet all your event requirements in a unique city centre location.

Conference Dates

Monday 2nd to Saturday 7th September 2019

Note: Alternative dates can be discussed if required

Venue Overview

DISTANCE FROM AIRPORT

10 miles

DISTANCE FROM CITY CENTRE

Located in the heart of the city centre

NEAREST RAILWAY STATION

Manchester Piccadilly – 1 mile

PARKING

Yes - chargeable

ACCOMMODATION

2,500 rooms within a couple of minutes walk

ACCESSIBILITY

Yes - full

AIR CONDITIONING

Yes - full

WIRELESS INTERNET

Yes - free of charge to delegates, exhibitors and organisers

ADDRESS

Manchester Central
Petersfield, Manchester, M2 3GX

WEBSITE

manchestercentral.co.uk



**Manchester
Central**

Manchester Central will provide unrivalled flexibility of space and quality of service.

Manchester Central offers three exhibition halls, a purpose-built convention auditorium, plus a suite of corporate facilities and breakout rooms, all interconnected on a compact site.

Manchester Central Spaces

1. Central Foyer

A light and airy modern foyer space on the front of the Grade II-listed building provides additional 1,280m² space for networking or additional exhibition stands. A moveable wall system creates six self-contained meeting rooms perfect for breakout sessions, meetings or workshops. Alternatively they can be taken down to leave 1,650m² of space.

2. Central Hall

The main exhibition space, Central Hall, provides a single column-free area that can be used for conventional exhibition layouts or for more unusual installations that utilise its height and character. It can also be subdivided to create two individual halls Central 1 and Central 2, each with organisers' offices, a dedicated entrance and cloakroom. The ceiling height and scale of the hall also allow it to be used simultaneously to provide exhibition space plus a seated auditorium for up to 9,000 delegates. The recently installed 'Mother Grid' also provides the latest AV technology and lighting.

3. Charter Foyer

Charter Foyer is one of three main foyer entrances to the complex and offers exclusive networking facilities and additional circulation space for your event as well as flexible access to the main conference and exhibitions spaces.

4. Charter Suite

The Charter Suite is a collection of rooms that can be used individually or in combination for workshops, breakouts, small corporate events and crew catering. Charter 1, 2 and 3 can be combined to provide seating for up to 800 delegates theatre-style.

5. Exchange Auditorium

The 804-seat purpose built Exchange Auditorium provides state-of-the-art facilities capable of meeting the most sophisticated audio-visual requirements. The light and expansive foyers conveniently connect to a range of conference breakout rooms and a suite of organisers' offices with natural daylight.

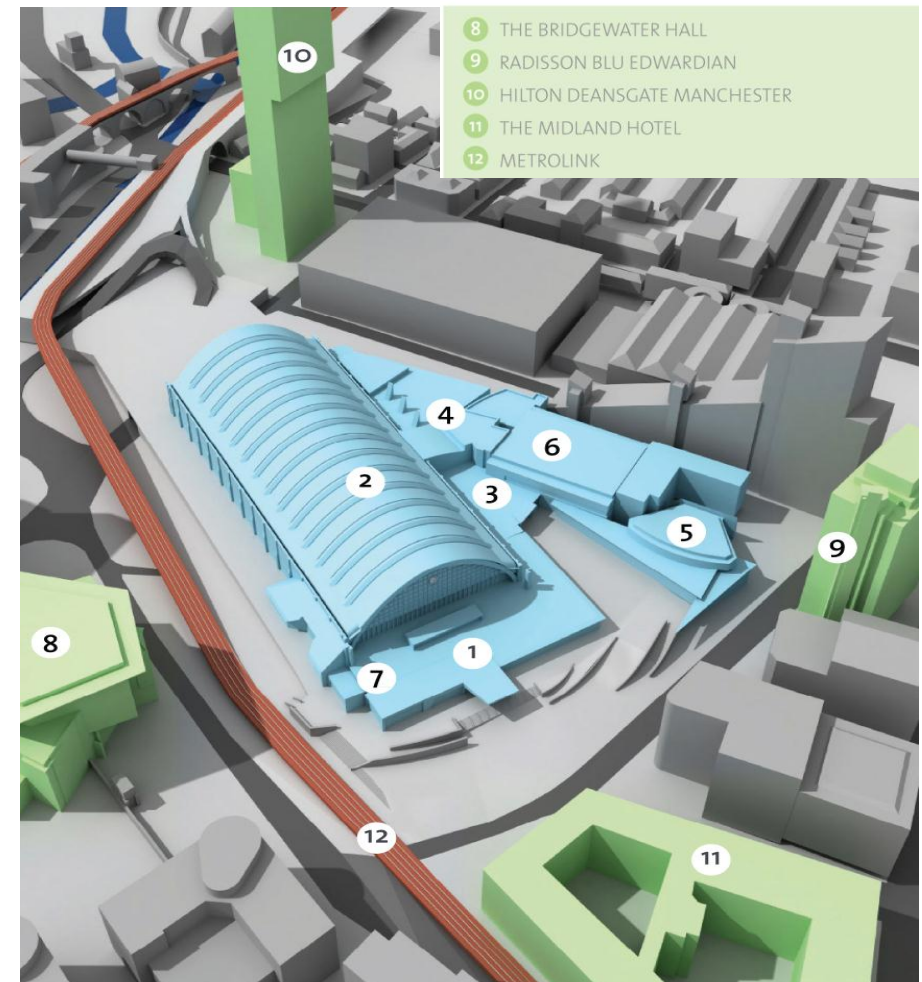
6. Exchange Hall

Adjacent to the Exchange Auditorium, this 1,830m² space can be used for everything from trade exhibitions and event hospitality to conferences and large-scale banqueting.

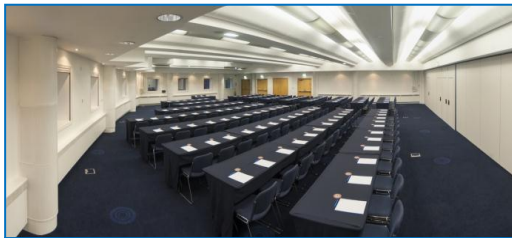
Key

- 1 CENTRAL FOYER
- 2 CENTRAL HALL
- 3 CHARTER FOYER
- 4 CHARTER SUITE
- 5 EXCHANGE AUDITORIUM
- 6 EXCHANGE HALL
- 7 THE COBDEN ROOMS

- 8 THE BRIDGEWATER HALL
- 9 RADISSON BLU EDWARDIAN
- 10 HILTON DEANS GATE MANCHESTER
- 11 THE MIDLAND HOTEL
- 12 METROLINK



Venue Floor Plan



Workshops / Sessions / Symposia

Exchange Room 8 - Capacity: 40 theatre
Exchange Room 9 - Capacity: 240 theatre
Exchange Room 10 - Capacity: 100 theatre
3 Rooms Combined - Capacity: 400 theatre



Workshops / Sessions / Symposia

Exchange Room 11 - Capacity: 150 theatre



Breakout Rooms

Exchange Room 1 - Capacity: 80 theatre
Exchange Room 2&3, 4&5, 6&7 - 80 theatre

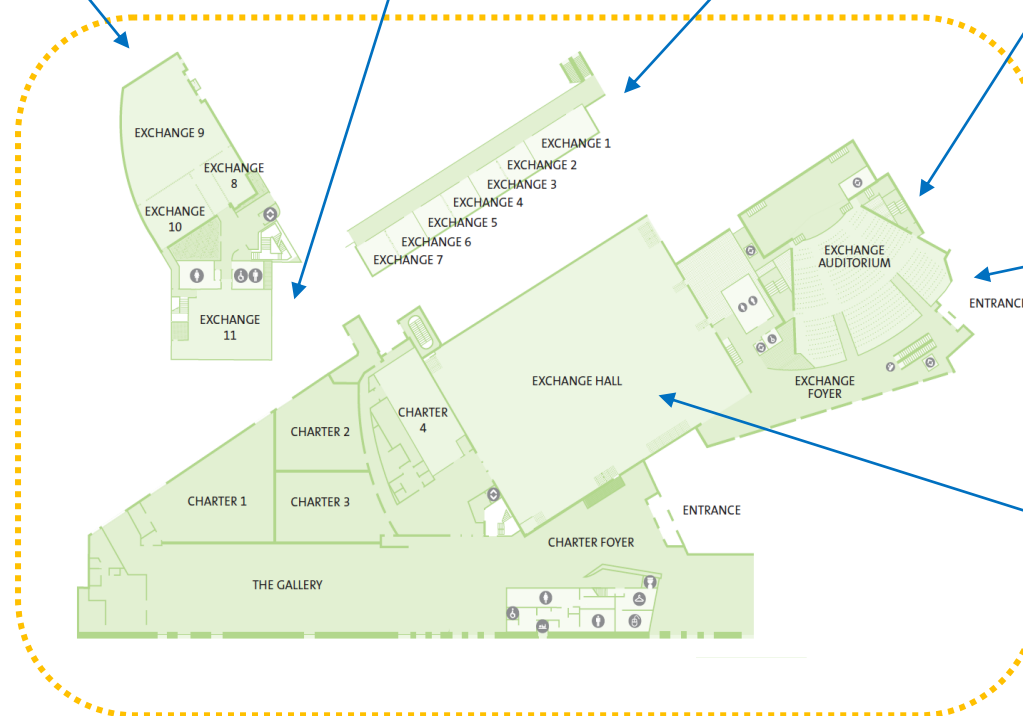


Plenary Auditorium

Exchange Auditorium
 Capacity: 804 tiered lecture theatre

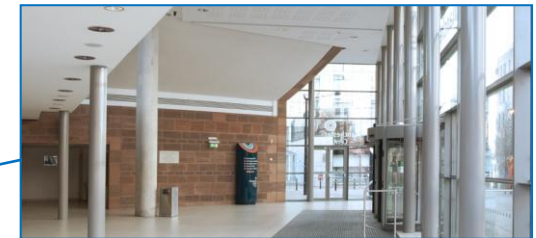
NOTES

- This floor plan has been prepared to give an example of how Manchester Central could host ISFG 2019.
- Manchester Central is a flexible venue which can accommodate meeting requirements in different ways. Alternative event footprints can be discussed if required.
- This floor plan is not to be used for scale. Detailed technical plans and specifications can be supplied on request.



Organisers' Offices

Exchange Organisers' 1 & 2



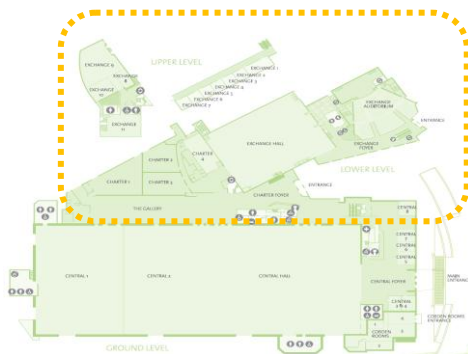
Foyer & Registration

Exchange Lower & Upper Foyers



Exhibition, Posters & Catering

Exchange Hall
 Capacity: 1,834m² of open space



Event planning: with you all the way

An experienced planner from our specialist team will support you from the start. Once we understand your requirements we make sure your event makes best possible use of Manchester Central's spaces, facilities and wider resources.

We can: help develop the special touches that make an event distinctive; plan pre- and post-event logistics; meet delegate and visitor needs before and during the event; take care of security and health and safety obligations; and provide the best possible access facilities for delegates and visitors.

Anticipated Annual Increase

This proposal has been drawn up to reflect the exact requirements listed in the guidelines, therefore no additional increase on these costs is provisioned.

Rental Price Inclusions

- Carpet (in the spaces outlined in this proposal)
- General cleaning
- Survey and mark out of exhibition
- House lighting
- Telephones – 1 x instrument(s) and connections (excluding calls) for organisers in organiser offices
- Public address system
- Fire extinguishers where required
- External lighting
- Refuse clearance
- Dedicated Events/Operations Team
- 2x stewards/cloakroom attendants during open period
- Dedicated concierge as access control during tenancy period
- First aid facilities with one venue first aider in attendance during tenancy
- Complimentary Wi-Fi

Wi-Fi

Manchester Central is proud to provide high speed, 1GB Wi-Fi for free. Guests, exhibitors and delegates can enjoy this market-leading service throughout the venue.

Catering

We pride ourselves on our catering services and creativity is always on the menu. Our chef Simon Firth is internationally renowned for inspired menus and beautifully presented food. Whether you require a light snack or a large-scale banquet, our skilled and experienced team attend to every detail with flair and consummate professionalism.

Outline costs

- Organic Teas and Fairtrade Coffee £2.05 + VAT
- Organic Teas and Fairtrade Coffee with homemade biscuit £2.45 + VAT
- Organic Teas and Fairtrade Coffee with mini Danish pastries £3.20 + VAT
- Homemade sandwiches £3.60 + VAT
- Bowl Food from £24.00 + VAT (4 bowls)
- Packed Lunch £11.50 + VAT
- Finger buffet from £20.50 + VAT
- Hot Fork Buffet from £24.00 + VAT

Audio-visual

Blitz Communications are one of the UK's leading audio visual supplier. They provide all of Manchester Central's AV equipment and services and Blitz managers and technicians are always onsite. As well as a vast array of video, sound, lighting and graphics kept at the venue, Blitz also have a £12m equipment inventory at their nearby Manchester office.

Accessible facilities

Manchester Central's facilities maximise accessibility for all. Most conferences are held on the ground floor and can be easily accessed from street level. Our first floor facilities can be reached by lift and stairs.

Sustainability

Manchester Central is committed to minimising its impact on the environment. All our activities reflect this commitment and we take our corporate, social and environmental responsibilities very seriously.

We recently became one of the first major venues in the UK to achieve ISO 20121. This international standard in event sustainability aims to boost the local economy and reduce our impact on the environment. It also engages with and helps to educate the local, national and international community.

Security/stewarding

Manchester Central's security team tailor all arrangements around your needs. They provide helpful, professional service and safeguard staff, delegates and property to ensure that everything runs smoothly.

Parking

Manchester Central has a large NCP car park directly beneath the venue. There are also several other large parking facilities within a short walk of the venue.

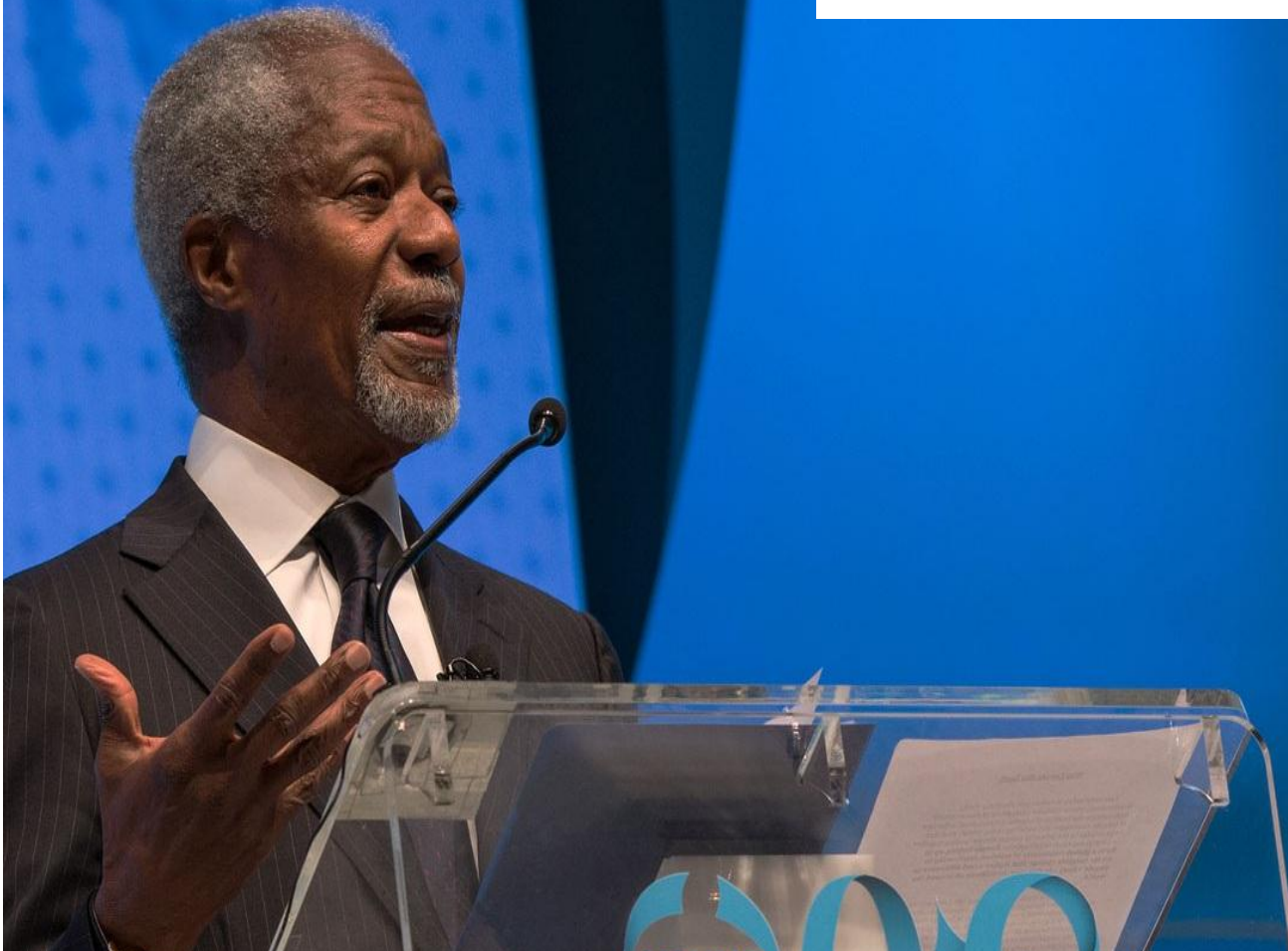
Traffic management

All vehicle access is controlled by Manchester Central. This service is supplied at an additional cost and can be tailored for your event.

Contracted services

All clients will be contracted to use Manchester Central's supplier for rigging, electricity, gas, water and compressed air. All clients will be contracted to use Manchester Central Hospitality.

Professional Conference Management



“We break all boundaries, we think big, we think differently. We ensure the conference is delivered in the most innovative and creative way. Our vision is to create a delegate experience that keeps them excited and engaged every step of the way”

Nicola McGrane
Managing Director, Conference Partners Ltd.



Image: Kofi Annan speaking at the One Young World Summit 2014. Organised by Conference Partners, the event took place in Dublin in October 2014 and attracted some 1,300 delegates aged between 18 and 30 from 194 countries.

Established in 1998 by Managing Director, Nicola McGrane, **Conference Partners** is a full service, multi award winning and internationally accredited Professional Conference Organiser with offices in Manchester, Edinburgh and Dublin and operating globally.

We have earned a reputation for excellence and as a result, we have an extensive portfolio of international association conferences for world-renowned organisations. Our goal focused approach and proven track record stands testament to our ability to comprehensively understand our clients' needs and in turn provide the optimum solutions for the smooth running of their conference or event.

Open communication, strong relationships, reporting and on-going engagement between our team and stakeholders is paramount to the success of each event we undertake.

"Enhance your reputation by depending on ours" is the company motto and we continue to maintain and uphold this belief by providing a world class service to our clients.



Driven by passion and enthusiasm, our experienced team of 50 highly skilled and multilingual professionals will organise this unique and prestigious event with commitment to your mission and a focus on creativity, efficiency and premium quality.

Our approach is in our name, we will **partner** with the organising committee to deliver the most successful congress to date.

By immersing ourselves in your culture and approach, we will identify the strategy best suited to achieving your objectives; guaranteeing the maximum engagement of all the delegates at the congress and delivering a return on your investment. In short our objective is to achieve yours.

**Conference Partners
has been selected to
deliver ESOF 2016 in
Manchester**



Case Study – HGV 2014

Event: 15th International Conference on Human Genome Variation and Complex Genome Analysis

Dates: 17th-19th September 2014

Location: Belfast, UK

Delegates: 120 delegates plus 22 speakers

Testimonial: "Just a note to convey my appreciation and that of the HGV2014 Organising Committee for the truly superb job you all did both individually and collectively to make HGV2014 such a success. Your attention to detail, your superb professionalism and your engaging interaction with both speakers and delegates helped to make HGV2014 the success that it was"

Professor Mark Lawler

Chair in Translational Cancer Genomics and Associate Director of Postgraduate Studies, Centre for Cancer Research and Cell Biology, Queens University Belfast



Case Study – ESOF 2012

Event: EuroScience Open Forum 2012 (ESOF 2012)

Dates: 11th-15th July 2012

Location: Dublin, Ireland

Delegates: 5,000 delegates

Testimonial: "Conference Partners for us, and the relationship with Conference Partners has been an excellent one. If I was looking to organise an event like this again the first port of call would be Conference Partners."

David Fahy

Director, ESOF 2012



Our implementation plan is what turns the strategy into a day-to-day action. The strategy will focus on the “what” and the “why” while the implementation focuses on the “who”, “where”, “when” and “how”.

A great strategy lies in successful implementation.

We will develop a master plan that outlines all activities happening in the life span of each project on a month-by-month basis in calendar format. However, given that some items such as marketing and communications are ever changing, this plan will remain somewhat flexible.

We view the Conference Partners’ team as an integrated extension of the Local Organising Committee (LOC). We will merge our combined talent to deliver the most successful, memorable and unique ISFG Congress to date.

Our team will bring a wealth of knowledge, creativity and innovation to each project based on 17 years’ experience in managing international conferences and events. They are highly trained to IAPCO International standards and are the best in their field.

Conference Partners’ role is to support the LOC and share our experience, giving ISFG peace of mind in knowing that all aspects of the management of the congress will be taken care of. ISFG will be appointed a project manager who will liaise frequently with the LOC to ensure that expectations are met and exceeded.



On-site Management: Your project manager will manage on-site co-ordination to ensure the execution of all stakeholder functions. This will involve onsite management of the workshop sessions, AV, exhibition, speaker ready room etc., to ensure the smooth running of all aspects of the congress.

Website: Our in-house graphic design and web development team can design a bespoke website for all information relating to the congress, including online registration and booking of accommodation.

Congress Programme: In consultation with the LOC and ISFG, Conference Partners will co-ordinate a detailed programme for the congress including timing, professional activities, social activities, transport, speakers and use of technologies to extend delegate participation beyond the physical congress venue.

Speaker Management: Our team can manage the arrangements for all of the speakers to include travel, accommodation, other event activities (e.g. speaker’s dinners), speaker fees, expenses, gifts, biographies and thank you letters.

Accommodation and Travel Management: We can do all the sourcing, setting up, supervising and managing of the booking process for any accommodation requirements of the delegates, speakers and any other required staff members.

Audio Visual: Conference Partners will identify prospective vendors, negotiate price and service requirements with input from the LOC and ISFG. We will also ensure coordination between vendors and venue staff as required.

Congress Materials: As previously mentioned, we have an in-house graphic design team who will design all congress materials and all documentation relating to the congress- the LOC will have unlimited access to our designers, saving both time and expense.

Marketing: We will create a bespoke marketing and promotion strategy that will maximize delegate numbers and revenue. We will achieve this through:

- Continual liaison with the LOC and ISFG
- Detailed target market research
- The creation and implementation of both online and offline promotional campaigns

Sponsorship Management: Our dedicated exhibition and sponsorship sales team led by our Commercial and Sponsorship Director, Colm O’Grady, will manage the sponsorship and exhibition sales for ISFG 2019. Our team will work with the LOC to design the various sponsorship package offerings to ensure we are offering value and maximising the commercial potential.

Post Congress Reporting: A final report will be compiled by your project manager containing detailed analyses of the congress as we believe that it is important to gauge the return on investment and, more specifically, whether the objectives of the congress have been met.

Financial Management: We understand the importance of careful financial management. We have planned a detailed financial management procedure and budget that we believe is very realistic for ISFG 2019.

Outline Budget

Conference Partners, with support from the LOC, has prepared a sample budget for ISFG 2019, based on an attendance of 550, 600 and 650 delegates.

We firmly believe that this budget represents the conservative minimum amount which can be received for the congress.

- An overview of income and expenditure has been presented in Pounds Sterling (£)
- Detailed summaries of each of the budget lines can be supplied on request, as well as budget scenarios for different numbers of participants.
- The figures represented in this budget have been calculated based on different numbers of paying delegates. We expect to be able to exceed this conservative number of participants which will generate both additional and upgraded services for the participants.

Registration Fees

Every effort has been made to keep delegate registration fees as low as possible for all participants and in-line with previous congresses. The proposed fees reflect an approximate 10% increase on the 2015 congress. The registration fees are VAT exempt, subject to a qualification process to be approved by UK Revenue.

Based on this budget scenario we suggest registration fees as follows:

Early Registrations

Members	£345.00
Non-Members	£425.00
Students	£195.00

Late Registrations

Members	£415.00
Non-Members	£495.00
Student	£255.00
Workshops	£125.00
Gala Dinner tickets	£55.00

Budget Overview

EXPENDITURE	Number of Delegates:	550	600	650
		£	£	£
Fixed Costs		258,388.56	258,388.56	258,388.56
Variable costs		72,633.00	79,236.00	85,839.00
Sub total		331,021.56	337,624.56	344,227.56
Management Fee		26,055.00	27,910.00	29,765.00
Sponsorship & exhibition sales fee based on 15% of sales of figure below		15,000.00	15,000.00	15,000.00
Total Expenditure		372,076.56	380,534.56	388,992.56

INCOME	% uptake	550	600	650
£345 Member Early	42%	79,695.00	86,940.00	94,185.00
£415 Member Late	5%	11,412.50	12,450.00	13,487.50
£425 Non Member Early	24%	56,100.00	61,200.00	66,300.00
£495 Non Member Late	15%	40,837.50	44,550.00	48,262.50
£195 Student Early	11%	11,797.50	12,870.00	13,942.50
£255 Student Late	3%	4,207.50	4,590.00	4,972.50
	100%			
£125 Workshop Registration (based on 8 workshops [4 per day]; 40 delegates attending each; £125 per workshop)		40,000.00	40,000.00	40,000.00
£55 Gala Dinner ticket sales (based on 300 delegates attending; £55 per person)		16,500.00	16,500.00	16,500.00

Total Delegate Registration Income		260,550.00	279,100.00	297,650.00
Projected Sponsorship and Exhibition Income		100,000.00	100,000.00	100,000.00
Subvention funding (subject to application)		12,000.00	12,000.00	12,000.00

Total Income		372,550.00	391,100.00	409,650.00
Financial Outcome Based on Projected Income		473.44	10,565.44	20,657.44

Outline Budget

							Expected Target Delegates	600			
	Item	Unit Cost Fixed Costs	QTY Fixed Costs	Unit Cost Variable Costs	QTY Variable Costs (1 Delegate)	VAT %	Total Fixed Costs Nett	Total Variable Costs Nett	VAT	Total Fixed Costs	Per Delegate Variable Cost
		GBP		GBP			GBP	GBP	GBP	GBP	GBP
	Administration Fees										
	Conference Partners' Administration Fees - handling registration for 600 pax			30.00	1	20.00%	0.00	18,000.00	0.00	0.00	36.00
	Account Manager on Site for 7 days (1 day set up; 6 days of conference)	350.00	7			20.00%	2,450.00	0.00	490.00	2,940.00	0.00
	Delegate Services Team on Site for 7 days (4 members on set up day; 6 members on Mon; 5 members on Tues; 6 members on Wed; 4 members on Thurs; 2 members on Fri, Sat)	280.00	29			20.00%	8,120.00	0.00	1,624.00	9,744.00	0.00
	Venue: Manchester Central (Mon 2nd - Sat 7th Sept 2019)										
	Plenary (Set up day on Tues; Conference Wed-Sat)										
	Exchange Auditorium	13,893.60	5			20.00%	69,468.00	0.00	13,893.60	83,361.60	0.00
	Workshops (Mon & Tues) - early morning set up; no additional set up day will be required										
1	Exchange Room 1	820.00	2			20.00%	1,640.00	0.00	328.00	1,968.00	0.00
2	Exchange Room 2 & 3	820.00	2			20.00%	1,640.00	0.00	328.00	1,968.00	0.00
3	Exchange Room 4 & 5	820.00	2			20.00%	1,640.00	0.00	328.00	1,968.00	0.00
4	Exchange Room 6 & 7	820.00	2			20.00%	1,640.00	0.00	328.00	1,968.00	0.00
5	Exchange Room 8, 9 & 10	4,059.20	2			20.00%	8,118.40	0.00	1,623.68	9,742.08	0.00
6	Exchange Room 11	1,528.80	2			20.00%	3,057.60	0.00	611.52	3,669.12	0.00
	Exhibition, Posters and Catering (Set up day on Tues; Conference Wed-Fri)										
	Exchange Hall	8,680.80	4			20.00%	34,723.20	0.00	6,944.64	41,667.84	0.00
	Other Areas (Mon - Sat)										
	Registration Area: Exchange Lower Foyer	0.00	6			20.00%	0.00	0.00	0.00	0.00	0.00
	Networking Area: Exchange Upper Foyer	0.00	6			20.00%	0.00	0.00	0.00	0.00	0.00
	Speaker Preview Room	0.00	6			20.00%	0.00	0.00	0.00	0.00	0.00
	Organisers Offices: Exchange Organisers Offices 1 & 2	0.00	6			20.00%	0.00	0.00	0.00	0.00	0.00
	Catering - Daytime										
	Workshop Days (Mon, Tues) 4 workshops per day; based on 40 attending each										
	Organic Teas and Fairtrade Coffee (Mon & Tues: 2 per day AM & PM)	2.05	640			20.00%	1,312.00	0.00	262.40	1,574.40	0.00
	Sandwich Platters (Mon & Tues)	5.00	320			20.00%	1,600.00	0.00	320.00	1,920.00	0.00
	Main Conference Days (Wed-Sat)										
	Organic Teas and Fairtrade Coffee (2 per day AM & PM; 1 AM Sat)			2.05	7	20.00%	0.00	8,610.00	0.00	0.00	17.22
	Grab and Go packed lunch (Wed-Fri)			11.50	3	20.00%	0.00	20,700.00	0.00	0.00	41.40
	Evening Events:										
Tues	Welcome Reception in Manchester Central										
	Canapes per person (estimated)			10.00	1	20.00%	0.00	6,000.00	0.00	0.00	12.00
	Drinks reception per person (estimated)			8.00	1	20.00%	0.00	4,800.00	0.00	0.00	9.60
	Entertainment (estimated)	500.00	1			20.00%	500.00	0.00	100.00	600.00	0.00

Fri	Conference Dinner										
	Venue hire (dependant on venue)	0.00	1			20.00%	0.00	0.00	0.00	0.00	0.00
	3 course dinner with tea/coffee from	40.00	300			20.00%	12,000.00	0.00	2,400.00	14,400.00	0.00
	Wine per person from	8.00	300			20.00%	2,400.00	0.00	480.00	2,880.00	0.00
	Entertainment (estimated)	1,000.00	1			20.00%	1,000.00	0.00	200.00	1,200.00	0.00
	Accompanying Persons Programme										
	Cost of this is self financing	0.00	1			20.00%	0.00	0.00	0.00	0.00	0.00
	Print, Artwork, Design										
	Design of conference branding	750.00	1			20.00%	750.00	0.00	150.00	900.00	0.00
	Design of date for diary postcard	350.00	1			20.00%	350.00	0.00	70.00	420.00	0.00
	Printing of date for diary postcard, dependant on quantity	0.00	1			20.00%	0.00	0.00	0.00	0.00	0.00
	Design of final announcement	850.00	1			20.00%	850.00	0.00	170.00	1,020.00	0.00
	Printing of final announcement, dependant on quantity	0.00	1			20.00%	0.00	0.00	0.00	0.00	0.00
	Design of programme book, spec to be obtained - estimate including abstracts	3,500.00	1			20.00%	3,500.00	0.00	700.00	4,200.00	0.00
	Printing of programme, dependant on spec & quantity (a quote can be obtained when exact spec is recieved)	0.00	1			20.00%	0.00	0.00	0.00	0.00	0.00
	Design of online evaluation form	175.00	1			20.00%	175.00	0.00	35.00	210.00	0.00
	Name tents for speakers - dependant of quantity	100.00	1			20.00%	100.00	0.00	20.00	120.00	0.00
	Marketing & Promotion										
	Design & text of ezines	250.00	4			20.00%	1,000.00	0.00	200.00	1,200.00	0.00
	Management of social media platform, per platform based on content coming from client (if required)	2,500.00	0			20.00%	0.00	0.00	0.00	0.00	0.00
	Couriering of brochures to other conferences (a quote can be obtained if required)	0.00	1			20.00%	0.00	0.00	0.00	0.00	0.00
	CP attendance to promote at preceding conference in Korea x 7 days if required, this includes travelling days	495.00	0			20.00%	0.00	0.00	0.00	0.00	0.00
	Flight, accommodation, expenses attending the preceding conference in Korea for CP staff member attending, if required	0.00	1			20.00%	0.00	0.00	0.00	0.00	0.00
	Display stand, pull up signs, plasma screen for promotion at preceding conference in Korea - depends on exact requirements	0.00	1			20.00%	0.00	0.00	0.00	0.00	0.00
	CP attendance to sell sponsorship & exhibition space at other conferences (per day if required)	495.00	0			20.00%	0.00	0.00	0.00	0.00	0.00
	Postage, Couriers, Telephone										
	Postage per delegate for posting receipts, invoices, visa letters			1.95	1	20.00%	0.00	1,170.00	0.00	0.00	2.34
	Phone calls to delegates (queries, registration assistance, visa, credit control). Charged as overall rate per delegate			1.75	1	20.00%	0.00	1,050.00	0.00	0.00	2.10
	General Postage	200.00	1			20.00%	200.00	0.00	40.00	240.00	0.00
	General Couriers	200.00	1			20.00%	200.00	0.00	40.00	240.00	0.00
	Audio Visual Equipment										
	Estimated cost for AV	13,500.00	1			20.00%	13,500.00	0.00	2,700.00	16,200.00	0.00
	Website & Registration										
	Artwork, design and content of conference website includes registration fee up to 4 years	3,950.00	1			20.00%	3,950.00	0.00	790.00	4,740.00	0.00
	Shed for the programme section of the website	950.00	0			20.00%	0.00	0.00	0.00	0.00	0.00
	Setup of the secure on-line registration	850.00	1			20.00%	850.00	0.00	170.00	1,020.00	0.00
	Setup of client portal for reports on registration	350.00	1			20.00%	350.00	0.00	70.00	420.00	0.00
	Conference Materials										
	Conference bag/folder - based on shopper bag			5.00	1	20.00%	0.00	3,000.00	0.00	0.00	6.00
	Screen charge for bag	65.00	1			20.00%	65.00	0.00	13.00	78.00	0.00
	Pen per delegate (aim to get these sponsored)			1.00	0	20.00%	0.00	0.00	0.00	0.00	0.00
	Screen charge for pen	65.00	1			20.00%	65.00	0.00	13.00	78.00	0.00

	Note Pad per delegate (aim to get these sponsored)			1.00	0	20.00%	0.00	0.00	0.00	0.00	0.00
	USB key for conference programme and book of abstracts per delegate (aim to get these sponsored)			6.00	0	20.00%	0.00	0.00	0.00	0.00	0.00
	Name badge per delegate and lanyard, includes the putting together of the name badges			4.50	1	20.00%	0.00	2,700.00	0.00	0.00	5.40
	Delegate gift	0.00	1			20.00%	0.00	0.00	0.00	0.00	0.00
	Speaker gift	0.00	1			20.00%	0.00	0.00	0.00	0.00	0.00
	Display Materials										
	Stage set design and backdrop or hanging banners on either side of the stage	2,000.00	1			20.00%	2,000.00	0.00	400.00	2,400.00	0.00
	Directional pull up signs	380.00	4			20.00%	1,520.00	0.00	304.00	1,824.00	0.00
	Registration desk hire (included in venue hire)	195.00	0			20.00%	0.00	0.00	0.00	0.00	0.00
	Registration desk signage	295.00	6			20.00%	1,770.00	0.00	354.00	2,124.00	0.00
	Podium sign	200.00	1			20.00%	200.00	0.00	40.00	240.00	0.00
	A3 laminated signage	150.00	1			20.00%	150.00	0.00	30.00	180.00	0.00
	Poster boards -300 posters, 50 boards; 3 poster sessions with 2 posters per board using back and front	45.00	50			20.00%	2,250.00	0.00	450.00	2,700.00	0.00
	Lighting of poster boards (if required)	35.00	0			20.00%	0.00	0.00	0.00	0.00	0.00
	Notice board, dependant on spec, if required	395.00	0			20.00%	0.00	0.00	0.00	0.00	0.00
	Design of the signage above	650.00	1			20.00%	650.00	0.00	130.00	780.00	0.00
	Abstract Management										
	Setup of online abstract submission system	1,850.00	1			20.00%	1,850.00	0.00	370.00	2,220.00	0.00
	Per abstract charge	10.00	400			20.00%	4,000.00	0.00	800.00	4,800.00	0.00
	Sponsorship & Exhibition										
	Text and design of the sponsorship & exhibition sales brochure	850.00	1			20.00%	850.00	0.00	170.00	1,020.00	0.00
	Text and design of the exhibition manual	850.00	1			20.00%	850.00	0.00	170.00	1,020.00	0.00
	Sponsorship consultancy with Commercial Director per day if required	495.00	0			20.00%	0.00	0.00	0.00	0.00	0.00
	Sponsorship & exhibition management fee per sponsor/exhibitor (10 sponsors and 25 exhibitors)	195.00	35			20.00%	6,825.00	0.00	1,365.00	8,190.00	0.00
	Shell scheme, counter top, 2 stools and freight (estimated) - charged directly to the exhibitors	480.00	0			20.00%	0.00	0.00	0.00	0.00	0.00
	Exhibitor power supply, table and chairs for stand (estimated)	1,500.00	1			20.00%	1,500.00	0.00	300.00	1,800.00	0.00
	Electrician to bring power supply to each stand	350.00	1			20.00%	350.00	0.00	70.00	420.00	0.00
	Committee Expenses & Speaker Expenses										
	Free registration for LOC	132.06	4			20.00%	528.24	0.00	105.65	633.89	0.00
	Local organising committee expenses (tbc)	0.00	4			20.00%	0.00	0.00	0.00	0.00	0.00
	Free registration for invited speakers	132.06	6			20.00%	792.36	0.00	158.47	950.83	0.00
	Invited Speakers - free accommodation x 1 ngt, flight and expenses per speaker (estimated)	500.00	6			20.00%	3,000.00	0.00	600.00	3,600.00	0.00
	Finance										
	Merchant ID Number 35.00 per month	35.00	12			20.00%	420.00	0.00	84.00	504.00	0.00
	Releax Account 35.00 per month	35.00	12			20.00%	420.00	0.00	84.00	504.00	0.00
	Bank Charges - 2.95% on credit card charges based reg fee and accommodation x 600 pax x 60% paying by cc	7,434.00	1			20.00%	7,434.00	0.00	1,486.80	8,920.80	0.00
	Financial consultancy fees - estimated if required for VAT advice on registration fee, company setup advice	3,500.00	0			20.00%	0.00	0.00	0.00	0.00	0.00
	Insurance										
	Public Liability Insurance	750.00	1			20.00%	750.00	0.00	150.00	900.00	0.00
	Cancellation & Abandonment Insurance or waiver must be signed	0.00	1			20.00%	0.00	0.00	0.00	0.00	0.00
	Event specific insurance	0.00	1			20.00%	0.00	0.00	0.00	0.00	0.00
	Grand Total						£215,323.80	£66,030.00	£43,064.76	£258,388.56	£132.06

Accommodation



Manchester's vast choice of places to stay, from budget hostels to five star hotels, to the increasingly popular apart-hotel accommodation, makes attending an international conference in Manchester simple. Delegates will have a choice of a full range of accommodation, including internationally recognised brands, all within walking distance of the Congress venue.

Paul Bayliss MBE
Chair, Manchester Hotelier's Association



Image: Macdonald Manchester Hotel & Spa, set in the heart of Cottonopolis, is Manchester's largest four-star hotel. Conveniently located in the city centre, the hotel 338 stunning bedrooms, 14 state-of-the-art meeting spaces and a leisure club and spa.

From luxury accommodation to boutique hotels, serviced apartments or the convenience of an airport hotel, Manchester offers the full range of accommodation. There are over 7,500 hotel rooms in the city centre and over 20,000 across Greater Manchester - a complete offer that will meet the requirements of delegates, exhibitors, staff and speakers.

Affordable

In the last five years Manchester’s hotel industry has blossomed. Favourites like The Midland and the Palace Hotel have been joined by the Macdonald Manchester and the Park Inn. Chic options include Malmaison and the Velvet Hotel, while International brand names such as Hilton and Marriott also provide a familiar range for visitors.

We are aware of the importance of attracting those travelling on a budget to the symposium. Premier Inns, Ibis hotels and youth hostels provide a budget range of accommodation that offers value and quality.

Walking Distance

The city centre is walkable and compact and many of the hotels are within walking distance of each other and Manchester Central, located within the heart of Manchester and the proposed location of the congress.

Bedroom Rates

Below you will find indicative rates for accommodation based on information for 2014.

			
5 star:	£150.00	€207.00	\$220.50
4 star:	£140.00	€193.20	\$205.80
3 star:	£95.00	€131.10	\$139.65
2 star/ Budget:	£70.00	€96.60	\$102.90
Student en-suite	£40.00	€55.20	\$58.80
Hostel	£25.00	€34.50	\$36.75

Currency conversion based on £1.00 = €1.38 = \$1.47

7,500
bedrooms
in the city
centre



**Large
choice
of hotels**



2,500
rooms
within 5
minute walk



**Options
to suit
all
budgets**



Suggested Headquarter Hotels

The Midland Hotel

This historic Edwardian hotel, built in 1903, has had a £15 million refurbishment which has seen the hotel transformed to its former glory as Manchester's premier hotel. The Midland is set in the heart of Manchester, situated directly opposite Manchester Central, making it the ideal hotel to stay at when attending events there.

The hotel offers 312 en-suite and air conditioned rooms, two bars and two restaurants, one being the award-winning The French by Simon Rogan.

The Midland Hotel

Venue type:	Hotel
Rating:	4-star
Bedrooms:	312
Meeting rooms:	11
Max theatre:	700
Location:	City centre Immediately opposite Manchester Central
Indication of cost:	Circa £150.00 per room per night (indicative price based on 2014)



Radisson Blu Edwardian

In Manchester's most celebrated building, the Free Trade Hall, the Radisson Blu Edwardian is one of Manchester's finest luxury hotels, offering 263 bedrooms and suites just moments from Manchester Central.

The hotel offers a health club, swimming pool and Sienna Spa as a blissful urban hideaway. Through the hotel's soaring lobby, Steak & Lobster is a relaxed alternative for dress-down dining all day whilst Opus One bar and restaurant showcases the season's best British ingredients.

Radisson Blu Edwardian

Venue type:	Hotel
Rating:	5-star
Bedrooms:	263
Meeting rooms:	17
Max theatre:	350
Location:	City centre Immediately opposite Manchester Central
Indication of cost:	Circa £160.00 per room per night (indicative price based on 2014)



Hilton Manchester Deansgate

Spectacular. Stylish. Innovative. Situated within the lower 23 floors of the stunning 47-storey Beetham Tower, this contemporary hotel presents an iconic landmark on Manchester's impressive skyline. Just 25 minutes from Manchester Airport, this modern hotel offers stunning views from floor-to-ceiling windows of Manchester's constantly changing cityscape.

Catch up with colleagues at Podium Bar and indulge in a delicious meal before savouring cool evening cocktails at Cloud 23.

Delegates can also enjoy the 20-metre indoor pool with underwater viewing panels or unwind in the spa.

Venue type:	Hotel
Rating:	4-star
Bedrooms:	279
Meeting rooms:	14
Max theatre:	600
Location:	City centre - 4 minutes walk from Manchester Central
Indication of cost:	Circa £170.00 per room per night (indicative price based on 2014)



An Attractive Destination



Manchester is one of the UK's most diverse and cosmopolitan cities, attracting visitors with its fine traditions of sport, culture, music and top class events. With its welcoming attitude, varied tourist attractions, quality shopping and legendary nightlife, Manchester can offer delegates a vast choice of excursions, partner programmes and pre and post conference tours.

Nick Brooks-Sykes
Director of Tourism, Marketing Manchester



Image: Castlefield was the Roman heart of Manchester and later played an important role during the industrial revolution. Today, it is a place to escape the hustle and bustle of the city centre and is popular for waterside cafes and bars.

Welcome to Manchester

35

Situated centrally in mainland Britain, Manchester has a population of 2.5 million - a city with roots in ancient history which is now wonderfully cosmopolitan with its own unique character.

Victorian architecture dominates the city, although the city's medieval roots can be seen around the Shambles as well as the 500-year-old Chetham's School and Library buildings. Today a new reputation is being built by bold and innovative local architects progressing one of the most ambitious regeneration programmes in Britain.



Art & Culture

From artistic masterpieces to the history of football, Manchester has an impressive range of museums and galleries, most of which are free. The Museum of Science and Industry brings innovation to life in the world's oldest railway station, while the Imperial War Museum North demonstrates how war shapes people's lives.

Manchester is also home to the National Football Museum and the People's History Museum.

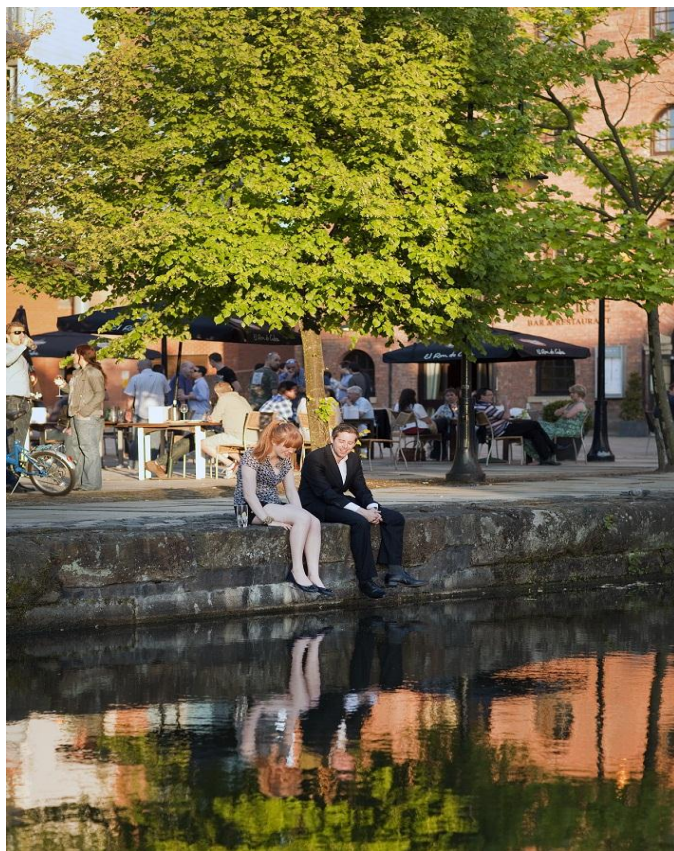
Important classic and contemporary art is on show at the Manchester Art Gallery, while you can find a plethora of smaller galleries all over the city.

Opportunities to experience live music in Manchester are as varied as they are exciting. The spectacular Bridgewater Hall is home to the Hallé Orchestra and welcomes musical talent from all over the world. Chamber music, folk, jazz, roots and

drum & bass all have their place and major international acts perform regularly in the 20,000-seat Manchester Arena.

You'll find everything from opera to comedy to experimental theatre at the Palace Theatre, Royal Exchange, Contact Theatre and The Lowry.





Food & Drink

With so many cultures rubbing shoulders with each other, it's no surprise that Manchester has a great reputation for food and drink. You'll find cuisine from practically every nation and to suit any budget, from high-class dining to top-notch takeaways.

Restaurants, bars and clubs can be found in most parts of the city centre, from the bustling Deansgate Locks and The Printworks to the upmarket Spinningfields and the bohemian Northern Quarter.

We have the UK's second biggest Chinatown, where you'll find great Asian restaurants, and the neon-lit 'Curry Mile' begins just a short walk from the city centre.

Shopping

From stylish shopping malls to specialist market stalls, quirky boutiques to vintage treasure troves, the city offers a unique and diverse shopping experience. All of the UK's best known department stores, including Selfridges and Harvey Nichols all within walking distance of the conference venue.



Sport

There is no doubting Manchester's global reputation when it comes to sport. Whether visiting delegates want to watch or take part, there are plenty of opportunities to enjoy some of the world's best facilities and great visitor experiences.

Lancashire County Cricket Club at Emirates Old Trafford, the National Cycling Centre, also known as the Velodrome, the Regional Tennis Centre and National Centre for Squash at SportCity, all host international championships for those who want to experience the electrifying atmosphere as a spectator.

But there's more to sport in Manchester than simply watching it. Delegates can swim, ski, dive, cycle and climb at a number of the region's best facilities.

Explore Greater Manchester

Greater Manchester comprises of ten distinct districts, each with a range of experiences on offer for visitors, including: canal cruises, unique events, local food and drink, market shopping and the great outdoors.

Sport





Manchester Football Experience

The greatest football story ever told

A unique package for football fanatics includes the fascinating stadium tours of both Manchester United and Manchester City football clubs, topped off with the National Football Museum – the world's finest collection of football memorabilia and artefacts.

Manchester Football Experience



Free Museums & Galleries

Accessible culture

Manchester offers over 90 museums and galleries – the majority of which are free to enter. Attractions include the newly refurbished Whitworth Gallery, Manchester Art Gallery, Imperial War Museum North, Museum of Science and Industry, The Lowry, and the John Ryland's Library.



The Quays

Manchester's waterfront destination

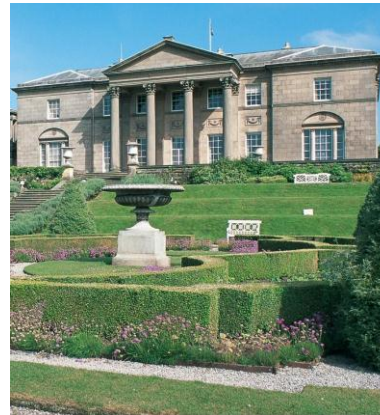
Located just outside the city centre, the districts of Manchester, Trafford and Salford combine on the banks of the Manchester Ship Canal to form The Quays – home to some spectacular attractions such as The Lowry, IWM North, Lowry Outlet Mall and MediaCityUK.



Explore Greater Manchester

Diverse neighbourhoods

Greater Manchester comprises of ten distinct districts, each with a range of experiences on offer to visitors, including: canal cruises, unique events, local food and drink, market shopping and the great outdoors.



Stately Homes & English Gardens

Step back in time

Visiting delegates can discover the grandeur of stately homes and gardens such as Tatton Park, Dunham Massey, Lyme Park and Chatsworth. Travel on a heritage train through the stunning countryside or on a canal boat through winding waterways.



National Parks & Countryside

Gateway to the North of England

Another excellent reason to visit Manchester is its proximity to National Parks and some of the most breathtakingly beautiful scenery and historically captivating sites in the UK. In less than an hour's drive the visitor can reach areas of outstanding natural beauty such as the Peak District, The Lake District and the Cheshire countryside.

Social Events

38

Manchester is able to suggest a number of unique venues for the welcome reception, congress dinner and fringe events. We welcome discussions as to how Manchester can deliver a truly memorable event for all guests.



Manchester Town Hall

One of the most iconic landmarks in the city. Its magnificent setting, steeped in a wealth of history, adds a touch of grandeur to events.

Location: City centre
Capacity - banqueting: 220
Capacity - reception: 1000



Manchester Cathedral

Offering an oasis amidst the bustle of the city, Manchester Cathedral offers some of the most breathtaking medieval spaces in England.

Location: City centre
Capacity - banqueting: 800
Capacity - reception: 1000



National Football Museum

The biggest and best football museum in the world provides a unique venue for entertaining conference delegates in Manchester.

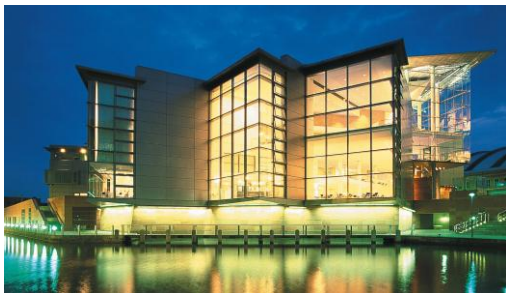
Location: City centre
Capacity - banqueting: 240
Capacity - reception: 500



MoSI

The Museum of Science and Industry offers an inspirational setting where guests can enjoy learning about Manchester's history of innovations.

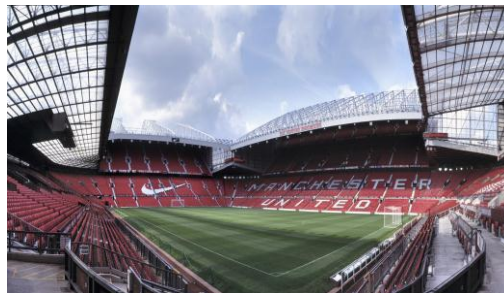
Location: City centre
Capacity - banqueting: 250
Capacity - reception: 450



The Bridgewater Hall

Manchester's iconic and prestigious international concert venue located adjacent to Manchester Central Convention Complex

Location: City centre
Capacity - banqueting: 240
Capacity - reception: 1875



Manchester United Football Club

Renowned as home to the world's most famous football club, Old Trafford is one of the leading venues for banqueting in the UK.

Location: 2 miles from city
Capacity - banqueting: 950
Capacity - reception: 1110



The Monastery

Offering stunning architecture and a peaceful atmosphere, this hidden treasure is now one of Manchester's most unique and inspiring venues.

Location: 2 miles from city
Capacity - banqueting: 500
Capacity - reception: 1000



Emirates Old Trafford

Lancashire County Cricket Club, a prestigious international cricket venue, is home to The Point, purpose-built to an extremely high specification.

Location: 2 miles from city
Capacity - banqueting: 840
Capacity - reception: 1000



Thank you for the opportunity to bid to host the Congress of the International Society for Forensic Genetics in 2019.

We believe that Manchester offers the following:

Strong Scientific Credentials

- A strong local team with the capability, experience and desire to host a successful conference.
- A large local audience of potential delegates in the UK.
- A strong industrial base which could bring in sponsorship and host technical tours.
- A proud UK heritage in science and medicine.
- Experience of delivering international conferences.

A World-Class Conference Destination

- A globally accessible city with non-stop flights to over 200 destinations.
- A supportive city which has agreed an in-principle award of £12,000.00.
- A world-class, flexible convention centre in the heart of the city.
- A track-record of hosting international meetings.
- A compact city centre with all amenities within walking distance.
- A number of unique venues to host the social programme.
- An attractive destination with lots to offer visitors.
- A multicultural city which is safe, welcoming and offers value for money.

A positive Legacy for ISFG

A memorable event which has science at its heart, is fully collaborative and is professionally delivered.

For further information on the contents of this bid please contact:

Dr Graham Williams

University of Huddersfield

g.a.williams@hud.ac.uk

Department of Chemical and Forensic Sciences
School of Applied Sciences

University of Huddersfield
Queensgate
Huddersfield
HD1 3DH

University of
HUDDERSFIELD

