

CANDIDACY FOR HOSTING

THE 28th CONGRESS OF THE INTERNATIONAL SOCIETY FOR FORENSIC GENETICS

Proposed period:
26–31th August or 9–14th September 2019
Prague, the Czech Republic
Prague Congress Centre





5	Introduction	47	Social Programme
11	Local and Scientific Support	53	Financials
17	Local Association and Relevance	57	Advertisements
23	Local Organizing Committee and Scientific Topics	61	Abstract Evaluation and Abstract System
27	Destination Highlights	65	Team and Timeline
33	Venue	69	Preselected PCO: C-IN
43	Accommodation	73	Conclusion



Introduction



Welcome Invitation



Prof. Tomáš Zima, MD., DSc.
Rector, Universitas Carolina Pragensis

Dear Professor Drábek,

Thank you for your letter announcing that your Society would like to organize congress of the International Society for Forensic Genetics which would be held in Prague in 2019. This is an excellent idea because Prague is widely known not only for its historical heritage but also as the international city of scientific congresses. I believe that such prestigious event would increase cooperation between scientists from different parts of the world and that all participants will be satisfied.

I strongly support decision to make Prague as a venue of the International Congress in Forensic Genetics in 2019.

Yours sincerely,



Sanjiv Suri
President of Board of Directors
Prague Convention Bureau

Dear Council Members,

I am extremely pleased to hear that Prague is being considered as the site for the ISFG Congress. I would like to extend to you my invitation to come to our city. There are several reasons that lead me to officially support this activity. I am convinced that Prague and the Czech Republic is an outstanding location for organizing meetings and congresses of national and international importance. As a result, the local professional staff has a great deal of experience in hosting prestigious events. I believe that you can easily find reliable and professional partners here to make your event a real success.

Prague provides suitable venues, state-of-the-art equipment and an effective infrastructure and also offers a large number of optional cultural and incentive programs. With its rich cultural heritage, numerous architectural monuments and ideal location in the heart of Europe, Prague has become a great attraction for tourists from all over the world and a favorite place for congresses and scientific meetings. Let me cordially invite you to Prague, not only to join your colleagues for mutual exchange of information, but also to experience the hospitality of our country.

Sincerely yours,



An Insight into the Beauty of Prague



*Prague city
centre has been
on the UNESCO
World Heritage List
since 1992.*

Accessible

- Conveniently situated in the heart of Europe making travel to the city a breeze for visitors from all over the world.
- The city centre and tourist areas can easily be enjoyed on foot, which is the best way to see the wonders of Prague.
- The Prague Conference Centre is approximately 5 minutes from the city centre on the main city metro line.



Vibrant

- Prague city centre has been on the UNESCO World Heritage List since 1992. Continually voted in the top 6 European tourist destinations, Prague continues to welcome close to 6 million visitors per year.
- Thanks to more than 1,000 years of historical development and change, Prague now uniquely showcases architectural styles including those from the Romanesque, Gothic, Renaissance, Baroque, Art-Nouveau and Cubist periods.
- Prague has a true majestic quality, bursting with fascinating museums, galleries, theatres, festivals and music venues.
- Prague simply doesn't have an off season with each season having its own energy inclusive of a wide range of activities and tours to suit any visitor.



Equipped

- Prague still represents considerable value for money with the highest facilities, within a safe and welcoming environment.
- According to the International Automobile Federation (FIA) Prague boasts the 4th best transport system in Europe due to its cleanliness, user friendliness and affordable pricing system.
- One of the few European airports awarded an Eagle Award from the International Air Transport Association (IATA) for substantial development, customer satisfaction, approach towards airlines and its incentive policy.



Prague's Unesco Heritage

Beautifully set on the banks of the Vltava River, Prague the City of a Hundred Spires is one of the most majestic cities in Europe.

The historic centre of Prague admirably illustrates the process of continuous urban growth from the Middle Ages to the present day. Its important role in the political, economic, social and cultural evolution of central Europe from the 14th century onwards and the richness of its architectural and artistic traditions meant that it served as a major model for urban development for much of central and eastern Europe. Prague represents one of the most prominent world centres of creative life in the field of urbanism and architecture across generations, human mentality and beliefs.

“Prague is an urban architectural ensemble of outstanding quality, in terms of both its individual monuments and its townscape and one that is deservedly world-famous.”

whc.unesco.org/en/list/616





Local and Scientific Support



Auspices and Support

Local Support

Local Stakeholders

City of Prague Tomáš Hudeček, Mayor www.praha.eu	Prague Convention Bureau Sanjif Suri, President www.pragueconvention.cz	CzechTourism Ing. Rostislav Vondruška, Director www.czechtourism.com	Prague Congress Centre www.kcp.cz
C-IN (PCO) Petr Marhoul, General Manager www.c-in.eu			



Auspices and Support

Supporting Scientific Institutions

Institute of Molecular Genetics of the ASCR, v. v. i. Prof. RNDr. Václav Pačes, DrSc. www.img.cas.cz	Czech Medical Association J. E. Purkyně Prof. Štěpán Svačina, MD, DSc. www.cls.cz	Judicial Academy Czech Republic Mgr. Filip Glotzmann www.jacz.cz	University of Chemistry and Technology, Prague prof. Tomáš Ruml, MSc, PhD www.vscht.cz
Society of Medical Genetics Czech Medical Society of J. E. Purkyně Prof. MUDr. Milan Macek MD, DSc www.cls.cz	Palacký University Olomouc prof. Mgr. Jaroslav Miller, M.A., Ph.D. www.upol.cz	Charles University Prof. Tomáš Zima, MD, DSc., Rector www.cuni.cz	The Police Academy of the Czech Republic in Prague. doc. JUDr. Mgr. Josef Salač, Ph.D., rektor www.polac.cz/g2/view.php?anglicky/index.html



Auspices and Support

Potential sponsors





Local Association and Relevance



Letter of Motivation



Assoc. Prof. Jiří Drábek, PhD.

Letter of Motivation to Organize the 2019 ISFG congress in Prague

The Czechoslovak Society for Forensic Genetics (CSSFG, www.cssfg.org) was established in 2005 as voluntary scientific association with aim to educate its members, legal profession, and laymen in forensic genetics. It organized (with help of Operational programme Education for Competitiveness or independently of external support) external quality assurance schemes, workshops, and conferences, most notably the biannual interence conference Forensica.

Forensica conferences were successful regarding both scientific and social programme. They hosted renowned invited speakers (among others, in alphabetical order: Drs. K. Bos, W. Branicki, C. Brenner, G. Cereda, M. Coble, J. Curran, E. Gusmao, G. Hampikian, Z. Jakovski, M. Kayser, W. Mayr, B. McCord, P. Mostad, C. Oz, W. Parson, K. Squibb-Williams, and K. Van der Beek) and were located in places of UNESCO World Heritage.

This being said, CSSFG would like to express their strong intention to host the 2019 ISFG congress.

We would like to welcome this prestigious and important event to our capital city, Prague.

There are several reasons why we have decided to do so:

- It represents for the local forensic geneticist and the Czechoslovak Society for Forensic Genetics a great honor because ISFG congress was not yet held in the region of the Czech Republic and Slovakia.
- Prague is a safe, tourist-friendly, and wonderful city with a rich history, magnificent architecture and diverse cultural experiences. Václav Havel International Airport is accessible daily from all major European cities and elsewhere, and the inexpensive Prague Integrated Public Transportation connects parts of the city in minutes .
- The Congress would be coordinated by the professional congress organization company C-IN (<http://www.c-in.eu/>), based in Prague that proved its active approach in the search for industrial sponsorship. The Congress would be held in the Prague Congress Center, which can accommodate up to 10,000 participants and is characterized by modern meeting facilities and optimum exposure to the industrial partners through a wide range of layout options.
- The local PhD students, postdoctoral fellows and established researchers are enthusiastic and highly motivated to do their best so that the Congress is an outstanding scientific event.

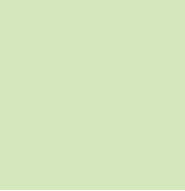
We would like to thank you in advance for considering our intention and we hope to cordially welcome you in Prague.

Best regards

Assoc. Prof. Jiří Drábek, PhD.

President

The Czechoslovak Society for Forensic Genetics



CSSFG Achievements



- International conferences Forensica (4)
- Seminars and workshops (10)
- Forensic genetics slidepool (120 slides)
- Student projects (19)
- Books (2), videotutorials (2), Textbooks (2), BoardGame (1), MindGame (1), and Jingle (1)
- External proficiency testing management software (1)
- Translation of international guidelines to Czech language (5)
- Publication in impacted journal (1)

Accessible through web pages www.4N6gen.org and www.cssfg.org.

Previous Experience with Forensic Genetics Conference Organization

Forensica conferences in Praha, Telč, and Valtice



Attendants of Forensica 2010



Candidacy for Hosting
the 28th Congress of the International Society for Forensic Genetics

Lecturers of Forensica 2012



Forensica 2014



Forensica 2014

Fulfillment of the Aims of the ISFG

Promoting scientific knowledge in the field of genetic markers as applied to forensic science.

Contributions for the Czech Republic

- Bringing the best forensic geneticist to the Czech Republic
- Increasing the visibility of CSSFG in the Czech Republic and worldwide
- Networking and teambuilding
- Tools, technologies, training, and best practices
- Vendor contacts

Congress Preparations

- The Czechoslovak Society for Forensic Genetics will follow the recommended timing for organizing the World Congress of the International Society for Forensic Genetics (ISFG).
- The first steps, such as the creation of LOC and acquisition of the support from the institutional, public, academic and governmental authorities, have already been taken within the framework of the preparation of the candidacy bid for ISFG 2019.
- The appointed LOC is ready to start assisting the ISFG with all further requirements regarding the BID evaluation.

Candidacy for Hosting
the 28th Congress of the International Society for Forensic Genetics



Local Organizing Committee and Scientific Topics



Suggested Conference Logo



Local Organising Committee



Andrea Cignová



Veronika
Gazdová



Jana Hájková



Aleš Hořínek



Marie Korabečná



Jiří Myšínský



Martina Novotná



Tomáš Pexa



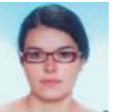
Markéta Šaňková



Halina Šimková



Petra Škapová



Kateřina Štaffová



Zuzana Štaffová



Pavel Tomek

Scientific Topics

- Forensic genetics and genomics of human and non-human biological samples
- Population genetics of polymorphisms of forensic interest
- DNA typing methodologies and strategies
- Forensic mathematics
- DNA phenotyping, pharmacogenetics, and epigenetics
- Forensic DNA databases
- Standards, quality control, accreditation, and ethics



Destination Highlights



© Creative Commons

Getting to the Czech Republic

Prague is a significant traffic hub, very well connected by all the major and budget airlines options. From Prague, 53 airlines fly to 130 destinations in 52 countries.

The International Prague Airport is situated about 15 km west from the city centre and is well connected by public transport. It takes about 30 minutes by public transport or a taxi service. Prague also has three international railway stations and an international bus station, all connected to the Prague city metro system.

Getting around the city centre of Prague is easy and inexpensive. Everything can be reached within a few minutes, even on foot.

Public Transport

4th Best Transport System in Europe

- The city of Prague provides complimentary tickets for delegates for the duration of the event.
- An advanced integrated public transport system with one ticketing system for the metro, bus, tram and train.
- High frequency timetables including night trams and bus services.
- Online timetables and journey planner applications.
- Metro operation from 5 am until after midnight.
- During peak hours underground trains run every 1–2 minutes and at least every 10 minutes in off-peak hours.
- SMS ordering service for tickets.
- More info at www.dpp.cz/en.

Getting to Prague

By Plane

- Easily accessible from all major European cities (max. flying time of 2.5 hours).
- Direct flights from 130 destinations all over the world.
- Two International Terminals – Terminal 1 and 2.
- Many low cost providers along with top quality scheduled airlines.

By Car

Distance to European cities:

Berlin	350 km
Zürich	694 km
Frankfurt am Main	508 km
Amsterdam	877 km
Budapest	525 km
Bratislava	328 km
Kraków	540 km

By Train

Prague has several train stations, but international trains are likely to arrive at the main railway station – Hlavní Nádraží. There are also some international arrivals at Nádraží Holešovice. Both of these stations are conveniently connected via the metro (red line C) and go directly to the Prague Congress Centre and neighbouring hotels at Vyšehrad station.



© Creative Commons

Czech Republic Facts

POPULATION: 1,246,176 (Prague), 10.5 Million (Czech Republic).

LANGUAGE: Czech official and English widely spoken.

CLIMATE: Average seasonal temperatures – Summer 25 / Autumn 12 / Winter 0 / Spring 14.

CURRENCY: Czech crown (CZK), 1 EURO = 27.0 CZK, 1 GBP = 32.5 CZK, 1 CHF = 25.5 CZK. All major credit cards excepted and many hotels and restaurants except Euros.

TIME: CET (GMT +1), summer time: CET +1 (GMT +2).

AIRPORT: Vaclav Havel International Airport Prague.

The Czech Republic has 10.5 million inhabitants and since 2004 has been a member of the European Union. Due to its geographical location, the city is easily accessible from any destination worldwide. It is also a prominent member of the UNESCO World Heritage List with over 10 listed sites. Further to this the Czech Republic is visited by over 22 million visitors a year and is considered as a safe and economically stable destination. Prague has a history going back more than one thousand years and contains a wide range of historical architectural styles. The city has Romanesque rotundas, Gothic towers and cathedrals, noble Renaissance residences and palaces, Jewish synagogues, Baroque churches and monasteries, cubist, art nouveau, classic heritage sites and modern buildings from the 21st century. Prague is also an important university centre hosting the oldest university in Central Europe, being Charles University that was founded in 1348. Having provided the world with a number of key personalities and discoveries life today would be a different experience without the Czech Republic's contribution to science and education.

Prague is never in 'off season' with each season having something to offer. It is inherently linked with excellent operas, concerts, theatre and ballet performances. Prague is a true cultural treasure trove, bursting with fascinating museums, galleries, theatres, and music venues.

According to world acclaimed travel magazine Conde Nast Traveler, in 2014 Prague was awarded the title of the 3rd top city to visit in Europe. www.cntraveler.com

Why Prague, Czech Republic?

- The Czech Republic is a safe destination with a politically and economically stable environment.
- Rich cultural and historical heritage with numerous UNESCO listed sites.
- Ideal location with easy access – situated in the central heart of Europe.
- Events in Prague can promote a higher attendance including greater attendance from Eastern bloc countries.
- Prague is voted to have the 4th best public transportation system in Europe.
- High quality at competitive prices due to the nation's economy within Europe, providing great value for money.

Visa and Immigration Control

- Free circulation of scientists in the Czech Republic is guaranteed.
- No visa needed for visitors from EU countries.
- Many non-EU countries also don't need a visa: Albania, Andorra, Antigua And Barbuda, Argentina, Australia, Bahamas, Barbados, Bosnia And Herzegovina, Brazil, Brunei, Canada, Costa Rica, Guatemala, Honduras, Chile, Israel, Japan, Macedonia/Fyrom, Malaysia, Mauritius, Mexico, Moldova, Monaco, Montenegro, New Zealand, Nicaragua, Panama, Paraguay, Saint Christopher And Nevis, Salvador, San Marino, Serbia, Seychelles, Singapore, South Korea, Taiwan, United States Of America, Uruguay, Vatican, Venezuela.
- Citizens from the rest of world need a visa, but the procedure is generally quick and very simple. For more information, visit the website www.mzv.cz.



Prague Airport, Flight Durations and Connections

Prague Airport

- Modern, efficient and passenger-friendly.
- Dedicated welcome desk for event delegates within airport arrivals.
- Highest standard and cutting-edge technologies.
- Holder of a prestigious IATA Eagle Award in recognition of the airport's substantial development, customer satisfaction, its transparent and constructive approach toward all airlines and its incentive policy.
- Frequent bus connections to the city or maximum of 30 minutes drive.
- New flights agreed for Balkan areas, Russia and Casablanca, Morocco.
- Completing new renovations including an airport navigation system in 4 languages (English, Czech, Russian & Korean).
- Innovative lounge and hotel hire room options for transferring passengers.

Flight Durations

Amsterdam	716 km	1h30
Brussels	709 km	1h25
Copenhagen	628 km	1h20
Stockholm	1,061 km	1h55
Frankfurt	419 km	1h05
Helsinki	1,305 km	2h05
Madrid	1,759 km	2h50
Lisbon	2,238 km	3h35
London	1,024 km	1h55
New York	6,567 km	8h50
Atlanta	7,782 km	10h35
Oslo	1,117 km	1h50
Paris	864 km	1h45
Zurich	519 km	1h10
Dubai	4,447 km	5h50
Seoul	8,269 km	10h00





Venue



Prague Congress Centre (PCC)

The Prague Congress Centre is one of the most dominant landmarks of the capital with wonderful panoramic views of Prague. It can hold events for up to 9,300 participants in more than 50 halls, meeting rooms and conference rooms of various sizes. Equipped with the latest cutting edge technology the congress centre has a long standing tradition of hosting a wide range of international events and meetings of all sizes.

Thanks to its original purpose, the Prague Congress Centre evokes Eastern European history in the 20th Century. The building, originally named the Palace of Culture, served communist conventions from its opening in 1981, including the last communist congress in 1989. The venue therefore represents the heritage that not only influenced post-communist European countries but at the same time grants top quality conference service.

Due to its central location, the Prague Congress Centre is easily accessible from all hotels within the city. Further to this the congress centre has a strategic advantage with over 800 hotel rooms available within less than 5 minutes walking distance.



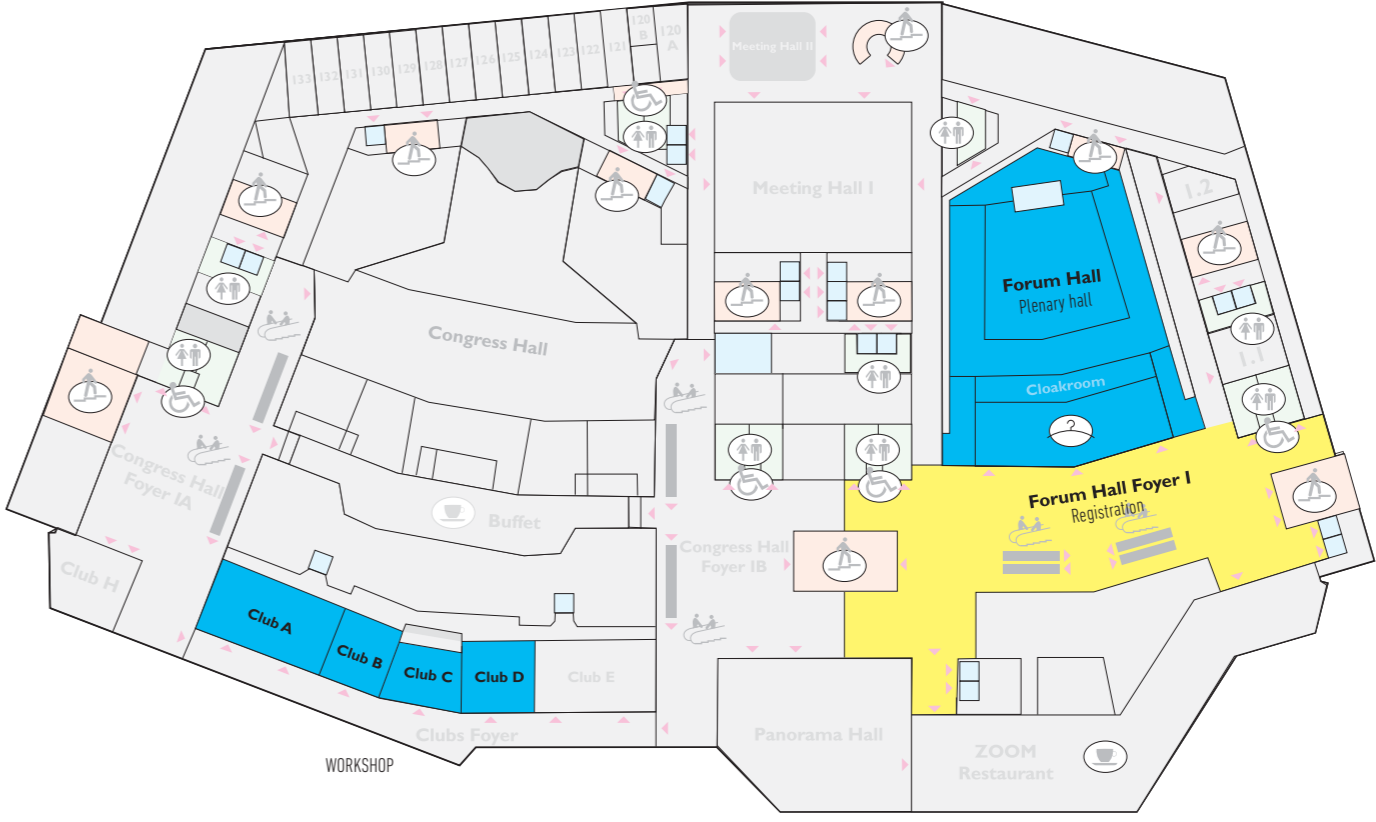
Venue Benefits

- Flexible options for events of all sizes.
- Located on the main metro line at Vysehrad station just 5 minutes from Muzeum central metro station.
- The Prague International Airport is located approximately 15 km from the PCC.
- Two large hotels just next to the PCC (Corinthia Hotel Prague & Holiday Inn).
- Plenary hall with a maximum capacity of 2,764 participants.
- Exhibition area of 13,000 sq.m.
- Total number of rooms: 20 halls, 50 meeting rooms.
- Newest AV and technical equipment.
- In-house catering company known as the best in the Czech Republic.
- Spacious foyers to hold large exhibitions with unique panoramic views over Prague including Prague castle, Vysehrad and the old town.
- Central office of C-IN being our chosen PCO also provides complimentary meeting space for IGC and IGC board meetings.



Floorplan

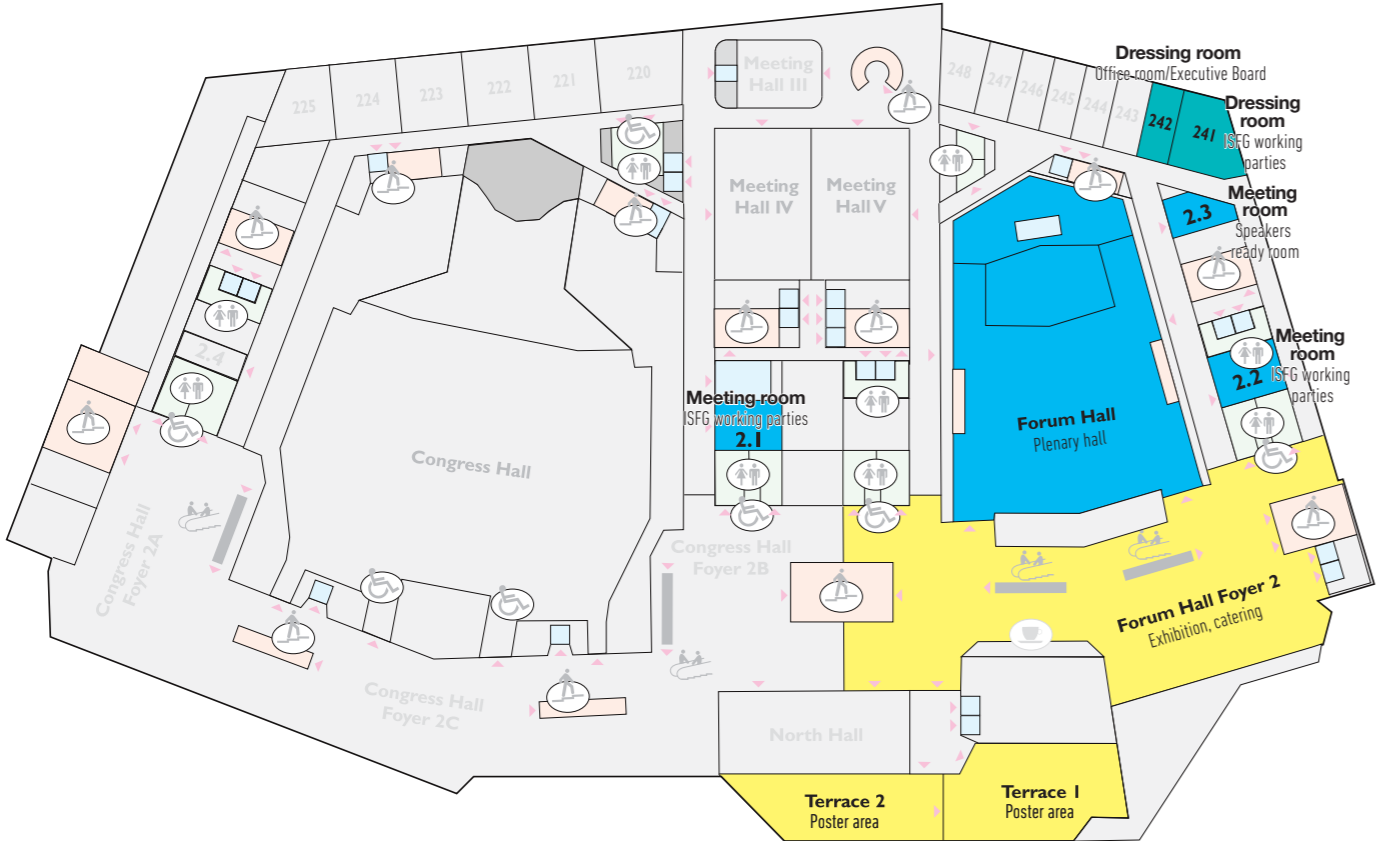
1st Floor





Floorplan

2nd Floor



MEETING SPACE	DETAILS
FORUM HALL PARTER – PLENARY HALL	Reduced parter, capacity 648 pax
CLUB A – WORKSHOP	Capacity 190 pax
CLUB B – WORKSHOP	Capacity 80 pax
CLUB C – WORKSHOP	Capacity 80 pax
CLUB D – WORKSHOP	Capacity 80 pax
MEETING ROOM 2.1. – ISFG working parties	Capacity 50 pax
MEETING ROOM 2.2. – ISFG working parties	Capacity 45 pax
MEETING ROOM 2.3. – Speakers Ready Room	Capacity 45 pax
DRESSING ROOM 241 – ISFG working parties	Capacity 35 pax
DRESSING ROOM 242 – Office room/Executive Board	Capacity 35 pax
FORUM HALL FOYER 2 nd FLOOR – Exhibition, catering	600 sqm
TERRACE I+II – Poster area	493 sqm
FORUM HALL FOYER 1 st FLOOR – Registration	592 sqm





Prague – a One Stop Solution

With all of the key requirements within 500 metres walking distance and just 5 minutes to the city centre via complimentary public transport provided, Prague provides a fantastically convenient solution for all ISFG Congress delegates. Therefore there is no need to manage the bus transport for ISFG delegates to reach the Prague Congress Centre, hotel or city centre.



Venue Location

Prague Congress Centre
Venue





Reference list of Conferences

International Conference of Nuclear Cardiology 8 (ICNC)

DATE: April 21, May 3, 2007
Pax: 3 000

Czech Presidency of the EU Council

DATE: 1st half of 2009
Pax: 7 000

61st International Astronautical Congress

DATE: September 27–October 1, 2010
Pax: 2 000

ICASSP 2011

DATE: May 22–27, 2011
Pax: 2 000

XLVIII ERA-EDTA Congress

DATE: June 23–26 , 2011
Pax: 10 600

International Society for Heart and Lung Transplantation – 32nd Annual Meeting & Scientific Sessions

DATE: April 18–21, 2012
Pax: 8 000

21st EADV Congress

DATE: September 27–30, 2012
Pax: 8 000

Congress of the European Association for Palliative Care

DATE: May 30, June 2, 2013
Pax: 3 000

AMEE Conference 2013

DATE: August 24–28, 2013
Pax: 3 000

The 30th Triennial Congress of the International Confederation of Midwives

DATE: June 1–5, 2014
Pax: 4 000

Conference of the European Association of International Education (EAIE 2014)

DATE: September 16–19, 2014
Pax: 5 000



Candidacy for Hosting
the 28th Congress of the International Society for Forensic Genetics



Accommodation



Accommodation

Prague offers world-class services at a reasonable cost. Prague’s hotels and other amenities, mostly built in the last decade, can accommodate more than 70,000 people and offer the highest standard of service. You can find any category of accommodation in Prague – from small, charming boutique hotels, luxury hotels in former palaces, international hotel chains and even dormitories to accommodate students. Due to their proximity to the Prague Congress Centre the following hotels have been selected as the most suitable for congress delegates.



HOTEL	TYPE	CAPACITY	DISTANCE	FROM PRICE, SINGLE ROOM
CORINTHIA	5*	550	Walking distance	170€
HOLIDAY INN	4*	250	Walking distance	140€
OTAR/OYA	3*	80	1 metro stop	70€
BERANEK	3*	80	1 metro stop	75€
ILF	3*	230	3 metro stops	75€
IBIS WENCESLAS SQ.	3*	180	1 metro stop	80€
PANORAMA	4*	500	1 metro stop	120€
YASMIN	4*	220	2 metro stops	140€
RADISSON	5*	200	2 metro stops	200€
HILTON	5*	791	3 metro stops	180€
MARRIOTT	5*	293	3 metro stops	180€
KOLEJE PETRSKA	2*	100	4 metro stops	20€
MASARYK DORMITORY	2*	300	6 metros tops	20€
HLÁVKOVA DORMITORY	2*	100	10 minutes by public transfer	20€
CHODOV DORMITORY	2*	1000	35 minutes by public transfer	15€





Social Programme



Gala Dinner Options

Prague is well known for its wealth of historical and entertainment venues. Combining this with a wide range of tried and tested facilities and suppliers, Prague can easily accommodate your needs and find the perfect place for you to hold your event. Based on previous experience and the potential size of your gala dinner we would propose either Žofín Palace, the Municipal House or the Industrial Palace as the honoured host for your gala delegates.



Žofín Palace

This neo-Renaissance palace was built in 1835–1837 on Slavic Island situated on the Vltava River. It immediately became a very important and attractive centre of cultural and social life, especially in the second half of the 19th century. It provides an exclusive environment with exquisite services for concerts, balls, congresses and gala receptions. The venue boasts views across the river to Charles Bridge and Prague Castle. www.zofin.cz/en



Municipal House

The Municipal House is a national cultural landmark and is among the most significant Art Nouveau buildings in Prague. The most influential Czech painters and sculptors of the time participated in the decoration of the Municipal House that also once housed the King of Bohemia from 1383 until 1485. In early history it was also the location of the Czechoslovak declaration of independence. www.obecnidum.cz



Výstaviště Prague

Located in Holešovice, sits the historic Art Nouveau gem, the Industrial Palace. One of the first mounted steel structures in the Czech lands, this glass palace is one of the most important Art Nouveau buildings in the city. Designed and built for the Jubilee Exhibition in Prague in 1891 by architect Bedřich Münzberger and František Prášil, the exhibition space holds a wide range of international events and fairs. www.incheba.cz

We look forward to introducing you to our cuisine and culture whilst providing the opportunity to meet your friends and colleagues in a majestic and royal atmosphere.



Guided Tours – What To Do in Prague



Prague City Tour

The Prague City Tour is a brief guided tour showing you some of the most famous sights of Golden Prague including the Charles Bridge spanning the Vltava River, the National Museum, the National Theatre as well as the Castle complex and its surroundings.



Jewish Quarter

The Jewish Quarter tour is a two and half hour, guided walking tour through the only Central European Jewish town quarter to survive to the Holocaust. One highlight the Old-New Synagogue in pure gothic style was founded in the 13th century.



Art Nouveau Tour

The end of 19th and beginning of the 20th century brought new architectural styles to Prague. You can compare various examples of Prague Art Nouveau with other styles during this period.



River Cruises

The River Vltava is a perfect place from which to admire the beauty of Prague. Prague Venice boat trips will show you Prague's main sights from the perspective of a local fisherman on his boat from many years ago cruising along the River Vltava.



Vyšehrad

Discover the beginnings of Czech statehood at Vyšehrad! According to legend, it is here at Vyšehrad where the first Czech rulers resided.



Franz Kafka Tour

This tour will take you to places associated with the famous writer, places that influenced his writing and were typical of the inspiring atmosphere of the city at the beginning of 20th century.



Beer Tour

The Prague Brewery Tour visits the best pub breweries in the city, including the most historic, to taste the beer brewed on the premises, and to soak up the long and famous tradition of brewing world class beer.



Museum Options

Prague has an abundance of quality museums ranging from the highly influential Art Nouveau artist Alfons Mucha to the National and Technical Museums, the Museum of Communism and the modern contemporary art DOX museum.

Guided Tours – A Day Out of Prague



Český Krumlov

Český Krumlov is situated on the Vltava river in South Bohemia. Due to its unique beauty the town is a protected UNESCO World Cultural and Natural Heritage site. Český Krumlov was founded in the 13th century.

A wide range of tickets, tours and tourist information will be available for delegates, families and groups. Further details will be provided as part of the symposium website and during the event at information or registration areas.



Terezin Concentration Camp

Terezin was converted into a prison at the beginning of the 19th century. During the 2nd World War and period of Nazi occupation in 1940, whilst under the control of the Gestapo, the town was turned into a Jewish ghetto.



Karlovy Vary

Karlovy Vary was founded in 1358 by King Charles IV and became famous throughout the world for its 12 medicinal mineral springs. Throughout the years celebrities have praised the curative effects of the town's mineral springs.



Karlštejn

The Karlštejn Castle tour is a fantastic historical and cultural trip. Located just 35 km southwest of Prague, the Karlštejn Castle is one of the most famous castles in the Czech Republic.



Kutná Hora

Kutná Hora was founded in the 13th century and due to its prosperous silver mining was the most important and richest town in Bohemia after Prague.



Villa Tugendhat

This work by the famous German architect Mies van der Rohe is to this very day regarded as one of the four most important villas in the world.



Lednice-Valtice

The Lednice-Valtice complex is another treasured site included in the world UNESCO list and is widely known as the Garden of Europe.



Litomyšl Chateau

This representative seat of the Pernštejn family is one of the most beautiful examples of the Renaissance style in Bohemia. High on the list for all those who appreciate top quality architecture.



Financials



Financials

- As LOC we are working closely with the leading PCO, C-IN. C-IN guarantees the overall financial responsibility of the project.
- We calculate 500 paying delegates. Our motivation is to welcome over 600 delegates.
- A specialised team is responsible for achieving the targets for exhibition and sponsorship income.
- Presented budget is calculated as balanced. Prague is an attractive destination with proved evidence of higher delegates’ attendance from all over the world, not only from Central and Eastern Europe. List of conferences organised in Prague also indicates that Prague together with the central location of the Prague Congress Centre are very attractive to potential sponsors and exhibitors. Therefore, we expect that Prague 2019 will be able to bring expected profit to ISFG.
- The Prague city authorities are offering the following supporting package:
- The Prague Congress Centre is supporting the event with a considerable discount for rentals and AV equipment to the value of 11 250 Euros.
- We will submit an application for Visegrad Funding of **up to 20 000 EUR**. Funds are agreed in the same calendar year.

Registration fee structure

Registration income is calculated 80 % in early bird and 20 % in regular registration fees.

Early Bird	
MEMBER	430,00 EUR
NON MEMBER	520,00 EUR
STUDENTS	200,00 EUR
ACCOMPANYING PERSONS	130,00 EUR
Regular	
MEMBER	510,00 EUR
NON MEMBER	610,00 EUR
STUDENTS	250,00 EUR
ACCOMPANYING PERSONS	160,00 EUR
Workshops	
1/2 DAY	80,00 EUR
1 DAY	110,00 EUR
2 DAYS	220,00 EUR

Registration Fee Includes

- Conference attendance.
- Coffee breaks & Lunches
- Welcome Reception.
- Conference Dinner.

Conditions for Students

- In support of increasing and promoting student attendance the congress budget includes a special fund of 5 500 Euros dedicated to this initiative. We are also ready to submit applications to a number of European institutions to acquire further supportive grants to increase these funds.
- Lower student registration fee in comparison to previous ISFG Congresses
- Offer of the low cost accommodation (dormitory) as of 15 EUR/night. Many dormitories are located within the city centre of Prague.
- Secretariat can advise low cost company (flights, trains, busses such as WizzAir, Student Agency etc. for the transportation).
- Some students working as hostesses at the event will also gain free entry to certain lectures and workshops.
- Free visit of Prague Universities organised by the secretariat.



Budget – Balance

BALANCE	Total (CZK, excl VAT)	Total (Euro, excl VAT)	% on total (excl VAT)
COSTS	6 494 293,00 Kč	240 529,37 €	
MEETING SPACE RENTALS	815 292,00 Kč	30 196,00 €	12,55 %
EXHIBITION, REGISTRATION, CATERING AREA	667 836,00 Kč	24 734,67 €	10,28 %
AV AND TECHNICAL EQUIPMENT	1 157 920,00 Kč	42 885,93 €	17,83 %
PRINTED AND ELECTRONIC MEDIA	487 170,00 Kč	18 043,33 €	7,50 %
FOOD AND BAVERAGES	628 575,00 Kč	23 280,56 €	9,68 %
SOCIAL PROGRAMME	875 000,00 Kč	32 407,41 €	13,47 %
SPEAKERS, GUESTS, LOC	269 000,00 Kč	9 962,96 €	4,14 %
STAFF	147 000,00 Kč	5 444,44 €	2,26 %
DELEGATE SERVICES	265 000,00 Kč	9 814,81 €	4,08 %
OTHER SERVICES	505 500,00 Kč	18 722,22 €	7,78 %
C-IN COST OF ORGANIZATION	326 000,00 Kč	12 074,07 €	5,02 %
C-IN FEE	350 000,00 Kč	12 962,96 €	5,39 %
INCOME	6 510 793,39 Kč	241 140,50 €	
REGISTRATION FEES	5 214 793,39 Kč	193 140,50 €	80,09 %
SPONSORSHIP AND EXHIBITION	1 296 000,00 Kč	48 000,00 €	19,91 %
BALANCE	16 500,39 Kč	611,13 €	

Rate CZK/Euro: 27,00.
Exchange rate EUR is subject to change.



Advertisements



Sponsoring and Advertising

Beneficial Partnership with the Association from the Same Field

C-IN will prepare a communication plan and strategy aimed at creating partnerships between associations with the same or similar scientific research objectives. In creating this common target group we seek to bring reciprocal benefits to the group whilst improving delegate numbers and program options for the events. This extended network can also bring new benefits such as additional exhibitions and promotions, increased distribution of promotional materials and satellite symposiums.

Destination Benefits and Income Screening

C-IN will use its experience in dealing with a wide range of convention bureaus and partners to ensure all opportunities for subventions and support are explored and negotiated. This includes when selecting and screening new destinations for events. The main aim is to both increase local promotion and income received whilst decreasing costs in the selected destination.

Media and Communication Plan

C-IN will prepare a strategy for communication with different stakeholders: a) Members and regular delegates b) Potential new delegates c) Other scientific and medical associations from the field d) Media.

New Members, Strategy and Communication

We focus on the new generation with an aim to recruit new long-term members within the academic field.

Communication Tools

Website, twitter and facebook, regular mailing, chat integrated into the website.

Printed and Electronic Materials

We will obviously use all of the standard tools such as 1st–3rd announcements, brochures, leaflets and additional items as requested. We also benefit from a competitive price point due to our location in Prague.

Income Strategy

- Identify the top 5–10 “must participate” companies.
- Identify the top 5 regional and public grants, including screening of education projects available for funding.
- Prepare “Invitation for partnership” with a detailed description of items that can be supported with conditions and prices.
- Manage the best possible exhibition layout in line with exhibitor’s expectations and venue regulations.
- Introduce, negotiate and sell exhibition space and partnership.
- Manage all connected administration and payment monitoring.



Example of the Invitation to the Industry





Abstract Evaluation and Abstract System



Abstract Evaluation and Abstract System

We fully comprehend that one of the most important parts of a scientific event is the programme and programme creation.

Our simple but sophisticated online abstract managing system offers a user-friendly environment for all parties – the submitters, the scientific committee, the reviewers. The system works on single account basis. Once account is created its owner may access for the abstract submission and evaluation which has a variety of settings and could be fully adapted for the needs of each event.

The evaluation takes place online, too, using the single account and login information. It is up to the client to decide whether to have a single or multilevel evaluation with one or more scoring criteria. One of the standard functions is the “conflict of interest” field, which we program into every evaluation by default. The scores are stored in the abstract database and the results are being counted continuously as the peer review goes by.

Submitters as well as the reviewers are always provided with submission/evaluation guidelines and walkthrough in order to facilitate their tasks. Moreover, the scientific committee stays informed thanks to a regularly received reports. These could be adapted to the needs and responsibilities of each member of the committee and could be sent as often as needed – daily, weekly, monthly. With all the functions and wide range of adaptability we try to keep the system as simple and user friendly as possible.

The highest number of abstracts has been submitted via our system within the 26th IUGG General Assembly. The total number of the correctly submitted abstracts was over 5800.

ABSTRACTS TO REVIEW

Please read the [Abstract evaluation guidelines](#) carefully. 3

Refer to the [Abstract evaluation walkthrough](#) for detailed instructions. 4

For abstract scoring, please refer to the following 5-point scale:

1	Do not accept
2	Poster
3	Rather poster
4	Rather oral presentation
5	Oral presentation

Select All/None	ID	Description	Submission Date	Preferred Method	Review Status
Acute lymphoblastic leukemia 1					
<input type="checkbox"/>	96	A prospective study on drug monitoring of PEGasparaginase...	09/01/2014	Oral	<div><div>Review</div><div>In Progress</div></div>
<input type="checkbox"/>	84	Augmenting clinical interpretability of thiopurine methyl...	06/01/2014	Oral	<div><div>Review</div><div>In Progress</div></div>
<input type="checkbox"/>	81	Fatal Neurological Side-Effects with Necrosis of Spinal C...	03/01/2014	Oral	<div><div>Review</div><div>In Progress</div></div>
<input type="checkbox"/>	80	Clofarabine in combination with PEG-asparaginase in the ...	03/01/2014	Oral	<div><div>Review</div><div>Not Started</div></div>
<input type="checkbox"/>	78	Toxicity of very prolonged PEGasparaginase and Erwinia as...	03/01/2014	Oral	<div><div>Review</div><div>Not Started</div></div>
<input type="checkbox"/>	72	Should We Use a Desensitization Protocol In Acute Lymphob...	28/12/2013	Oral	<div><div>Review</div><div>Not Started</div></div>
<input type="checkbox"/>	45	A single center results of flowcytometric determination o...	16/11/2013	Poster	<div><div>Review</div><div>Not Started</div></div>
<input type="checkbox"/>	44	THE CONTRIBUTION OF CD49F TO THE FLOWCYTOMETRIC MINIMAL R...	16/11/2013	Poster	<div><div>Review</div><div>Not Started</div></div>
<div>Proceed</div>					





Team and Timeline



Congress Team

The proposed team would actively undertake all tasks required to provide service of the highest standard and with maximum efficiency in both quality and response time. The proposed staff structure and coordinating responsibilities is as follows:



Karel Ježek
Congress Manager

Martina Kozderková
Accommodation
Manager

Alena Foltýnová
Social
Events Coordinator

Anna Hrabětová
Scientific
Program Coordinator

Tomáš Maxa
Project Supervision

Filip Psota
Exhibition Manager

Monika Fialová
Staff Coordinator

Martin Valter
Technical Support

Audery Gabarre
Sponsorship Manager

Congress Planning and Implementation Process



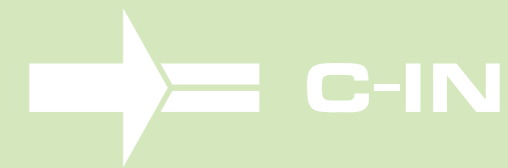
DATE D- / TYPE OF ORGANISATION / ACTION / DETAILS

0		Conference beginning
-3	Registration	Conference bags completion Conference bags filling (inserts to be indicated by the client)
-7	Registration	Registration material completion Invoices, badges, vouchers
-7	Printed materials	Printed materials delivery Final programme, abstract book, badges, vouchers.
-14	Internet	Online registration to be closed Any registration beyond this date will be dealt with on-site only as the online payment would not arrive in time. Delegates who register in this period will be notified about the above said.
-14	Printed materials	Final programme printing
-14	Accommodation	Final rooming list sent to hotels Including full prepayment and credit card guaranty details
-17	Printed materials	Final programme approved by the client Final version to be printed
-21	Printed materials	Final programme sent to the client for approval Pre-final version – last comments from client's side
-21	Internet	Final programme publication on the conference web site Programme at a glance, including minutes, lecture titles, speakers
-21	Suppliers	AV technical equipment order
-21	Suppliers	Refreshments (lunches, coffee breaks) order
-31	Printed materials	Final programme book and abstract book graphic data sent to the printing house In an official graphic design and layout (MS Word document)
-45	Conference bags	Conference bags order Final order (usually 50 spare bags)
-45	Sponsorship and Exhibition	Final exhibition floor plan All exhibitors, catering, poster board or registration areas are marked in the floor plan
-45	Programme	Final conference room allocation Plenary, parallel sessions, internet café, registration, poster, exhibition, catering.
-60	Accommodation	Cut off date for accommodation Date beyond which the availability of a room block is no longer applicable.
-60	Conference bags	Conference bags – approval by client, including print graphic Formal written form
-75	Conference bags	Conference bags – samples sent to the client for decision Conference bag samples to be finally chosen and approved
-90	Registration	Early bird registration fee deadline Automatically via registration system

DATE D- / TYPE OF ORGANISATION / ACTION / DETAILS

-90	Internet	Early bird to regular fee change Automatically via registration system
-104	Programme	Deadline for abstract acceptance notification Email confirmation about abstract acceptance and about oral/poster presentation
-120	Sponsorship and Exhibition	Exhibition manual compilation and distribution Information about order form, order conditions, time schedule, installation, contact persons
-124	Programme	Deadline for enabling abstract evaluation Online form (possibility to choose evaluation criteria)
-130	Programme	Deadline for online abstract submission Online form for abstract submission closure
-180	Programme	List of conference speakers – finalization
-210	Programme	Potential conference speakers notification Invitation letter including specific information on covered costs
-300	Programme	Call for abstracts Via email in most cases (mail bomber)
-300	Internet	Web page update (to the extent of the first announcement) Online registration and online abstract submission opening
-300	Printed materials	Second announcement distribution (if needed)
-320	Printed materials	Second announcement sent to the printhouse (if needed)
-345	Printed materials	Second announcement preparation (if needed)
-365	Printed materials	First announcement and poster distribution Distribution during previous conferences, through national associations
-365	Suppliers	Contract signed with the conference venue
-365	Suppliers	Contract signed with hotels
-375	Printed materials	First announcement sent to the printhouse
-380	Printed materials	First announcement – approval by client Formal written form
-390	Sponsorship and Exhibition	Potential conference sponsors notification
-395	Printed materials	First announcement and poster – graphic finalization
-400	Sponsorship and Exhibition	Sponsorship brochure compilation Fundamental sponsors categories, conference topics, venue, price per sqm.
-400	Printed materials	First announcement and banner compilation
-400	Programme	Conference topic (theme, motto) specification
-400	Internet	Web page publication (first announcement extent)
-420	Internet	Domain registration

Candidacy for Hosting
the 28th Congress of the International Society for Forensic Genetics



**Preselected PCO:
C-IN**



Preselected PCO – C-IN

C-IN specialises in event, congress and association management. The team of 50 people delivers more than 50 events per year throughout Europe and acts as a permanent secretariat for several European associations. Knowledge and experience in anticipating the dynamics of the meeting industry, stakeholder expectations and entrepreneurial drive are integral to providing success for its valued customers.



More info and references on www.c-in.eu

- C-IN is the only company with headquarters in the Czech Republic to be represented within the ranks of IAPCO. IAPCO is the most important industry organisation bringing highly qualified professional congress organisers (PCOs) together.
- C-IN is also a member of ICCA (International Congress and Convention Association), which represents specialists in organising, transporting and accommodating international meetings. ICCA has over 950 member companies and organisations in 87 countries worldwide.
- C-IN is also a member of following institutions:
 - ISO 9001:2000
 - Prague Convention Bureau (Platinum member)
 - Netherlands-Czech Chamber of Commerce
- C-IN is known for using top of range congress management software. Eventsforce is a multi-functional service software covering all event requirements, from pre-promotion to post-event analysis. It offers a complete online solution for registration, abstract submission and evaluation and online payments accepting all types of credit cards.
- C-IN has active participation within the scientific and technology industry. Team members regularly participate as invited speakers at the international congresses of ICCA. Further to this C-IN members have had active involvement with scientific association committees such as the past president (Ant) Arctic Matters.
- C-IN has a dynamic and international team including members from Australia, Belgium, Czech Republic, France, Italy and the United States of America.



Candidacy for Hosting the 28th Congress of the International Society for Forensic Genetics



General References

Selected references

EVENTS	DATE	LOCATION	PARTICIPANTS
European Conference on Applied Climatology (ECAC 2014)	Oct 2014	Clarion Congress Hotel, Prague, Czech Republic	500
11 th EES Biennial Conference	Oct 2014	Convention Centre Dublin, Ireland	700
LawTech Europe Congress 2014	Oct 2014	Clarion Congress Hotel, Prague, Czech Republic	650
Conference of the European Association of International Education (EAIE 2014)	Sep 2014	Prague Congress Centre, Prague, Czech Republic	5000
Czech Society of Nephrology Congress	Jun 2014	Prague Congress Centre, Prague, Czech Republic	700
The 30 th Triennial Congress of the International Confederation of Midwives	Jun 2014	Prague Congress Centre, Prague, Czech Republic	4000
25 th Annual Meeting of the International BFM Study Group & 9 th Biennial Childhood Leukemia Symposium	Apr 2014	Clarion Congress Hotel, Prague, Czech Republic	1000
11 th Annual EAU Section of Oncological Urology (ESOU) Meeting	Jan 2014	Hotel Hilton, Prague, Czech Republic	800
Annual Convention of the AeroSpace and Defence Industries Association of Europe	Oct 2013	Hilton Hotel, Prague, Czech Republic	700
European Symposium on Clinical Pharmacy (ESCP 2013)	Oct 2013	Clarion Congress Hotel, Prague, Czech Republic	600
42 nd EDTNA/ERCA International Conference	Sept 2013	Malmö Kunserthus, Malmö, Sweden	1200
Congress of the European Association for Palliative Care	May 2013	Prague Congress Centre, Prague, Czech Republic	2500
24 th Annual Meeting of the International BFM Study Group	May 2013	Audimax, Kiel, Germany	500
4 th Euchems Chemistry Congress	Aug 2012	Prague Congress Centre, Prague, Czech Republic	2500
26 th Conference of the European Health Psychology Society (EHPS)	Aug 2012	Diplomat hotel, Prague, Czech Republic	814
41 st EDTNA/ERCA International Conference	Sept 2012	Convention Centre Strasbourg, Strasbourg, France	1500
10 th EES Biennial Conference	Oct 2012	Finlandia Hall, Helsinki, Finland	700
10 th European Meeting on Glial Cells in Health and Disease	Sept 2011	Prague Congress Centre, Prague, Czech Republic	800
40 th EDTNA/ERCA International Conference	Sept 2011	Cankarjev Dom, Ljubljana, Slovenia	1500
XLVIII ERA-EDTA Congress	June 2011	Prague Congress Centre, Prague, Czech Republic	10661
13 th International GCIRC Rapeseed Congress	June 2011	Prague Congress Centre, Prague, Czech Republic	1000

Candidacy for Hosting the 28th Congress of the International Society for Forensic Genetics



Conclusion



Prague is one of the top 15 congress destinations in the world and also in the top 6 tourist destinations in Europe

Conclusion

- Hosting the ISFG 2019 represents a fantastic opportunity to further promote the current status of Forensic Genetics not only in the Czech Republic but throughout all of Europe. With considerable support from local, regional and scientific associations there is an incredible amount of motivation and energy to produce a scientific event that will at least match previous ISFG Congresses.
- The LOC will endeavour to bring at least 500 participants to the congress in Prague, with two priorities: bring both the best scientists from the field of forensic genetics from all over the world and a maximum number of PhD students and early postdoctoral fellows both from European and non-European countries.
- The congress would be an excellent opportunity for forming new regional collaborations and networks, as well as providing a format for further introducing international scientists to their central and eastern European colleagues. As the congress has never been held in Prague it is the perfect opportunity to stimulate activity and growth in this region.
- The LOC will perform a systemic job in contacting both European and non-European institutions and scientific societies in order to receive grants to support convenient admissions for PhD students, early postdoctoral fellows and scientists from less rich countries.
- In support of increasing and promoting student attendance the congress budget includes a special fund of 5500 Euros dedicated to this initiative. Some students working as hostesses at the event will also gain free entry to certain lectures and workshops.
- The location of Prague increases the participation from Eastern and Central European countries, whilst still being easily accessible for core member destinations.
- The local PCO will provide an exceptional accompanying persons program for family attendees in one of the world's top tourist destinations.
- Czech Republic is a safe and economically stable country guaranteeing visas and entry for scientists worldwide.
- Prague has a proven record of successfully organised large international events.



Contacts



Assoc. Prof. Jiří Drábek, PhD.
President
The Czechoslovak Society for Forensic Genetics
E-mail: info@isfg2019.org
Phone: +420 585 632 070

We look forward to welcoming you to Prague in 2019!

Members of the Executive Committee

International Society for Forensic

Genetics

Institut für Rechtsmedizin

Melatengürtel 60/62

Č. j. 15/op/100/009
Vytiskuje:
Zdeněk Giormani
tel. +420 221 580 453
giormani@czechtourism.cz
Prague 20th January 2015

Dear Council Members,

It is with great pleasure that I learned that the Czech Republic intends to hold the **Congress of the International Society for Forensic Genetics 2019 in Prague**.

As a director of the CzechTourism, I would like to assure you of our wholehearted invitation.

Visiting participants would find the opportunity for first-hand observation and recreation in our country which will certainly be an enriching and rewarding experience. The city of Prague is a very popular destination with all the facilities needed for holding congress events. The city with its rich historical background is considered a treasury of architecture which, together with the fact that Prague figures on the UNESCO list of the world's historical heritage, makes the city very attractive for foreign visitors and congress delegates. We believe that the vast range of cultural and social activities our city has to offer enables all visitors to choose the best way of spending their free time in our country.

I wish all participants at this future congress a mutually fruitful exchange of information as well as pleasant stay in Prague and the Czech Republic.

Best success in your initiative

Sincerely Yours

Monika Palatková
Managing Director of CzechTourism

International Society for Forensic Genetics
Members of the Executive Committee

Prague, 16th January 2015

Dear Executive Committee Members,

I am extremely pleased to hear that Prague is being considered as the site for the **Congress of the International Society for Forensic Genetics** in 2019. I would like to extend to you my invitation to come to our city.

There are several reasons that lead me to officially support this activity. I am convinced that Prague and the Czech Republic is an outstanding location for organizing meetings and congresses of national and international importance. As a result, the local professional staff has a great deal of experience in hosting prestigious events. I believe that you can easily find reliable and professional partners here to make your event a real success.

Prague provides suitable venues, state-of-the-art equipment and an effective infrastructure and also offers a large number of optional cultural and incentive programs. With its rich cultural heritage, numerous architectural monuments and ideal location in the heart of Europe, Prague has become a great attraction for tourists from all over the world and a favorite place for congresses and scientific meetings.

Let me cordially invite you and your colleagues to Prague, not only to join your colleagues for mutual exchange of information, but also to experience the hospitality of our country.

Sincerely yours,



Sanjiv Suri
President of Board of Directors
Prague Convention Bureau

International Society for Forensic Genetics - ISFG
Members of the Council of ISFG

Prague, January 19, 2015

Dear Council Members,


As the General Director of the Prague Congress Centre, I am very pleased to learn that International Society for Forensic Genetics would like to organize international congress in 2019 in Prague. I welcome this initiative and give it my full support.

I am convinced that Prague is a particularly appropriate city for hosting the organization this event of such significance. In the name of the Prague Congress Centre I can offer not only highly suitable premises, technical equipment and professional staff, but also many possibilities for the ISFG Conference's accompanying programme.

The Prague Congress Centre has hosted numerous high level international events such as the NATO Summit in 2002, World Seed Congress (ISF) 2008, Computing in High Energy and Nuclear Physics (CHEP) in 2009, the 61st International Astronautical Congress in 2010, EADV Congress "Skin is Vital" in 2012, Congress of the European Association for Palliative Care (EAPC) in 2013, the 30th Triennial Congress of the International Confederation of Midwives (ICM) in 2014, Conference of the European Association of International Education (EAIE) in 2014 and many others. Therefore, we are convinced that we have the experience and know-how to deliver the quality of service to ensure the success of the ISFG congress in 2019.

I believe that the ISFG Congress in Prague will be a great success and all the participants will gain a deep impression from the venue.

With kind regards,


Michal Kárník
General Director



Policejní akademie České republiky v Praze

Lhotecká 559/7, 143 01 Praha 4, P.O.BOX 54
tel.: +420 974 828 500, fax: +420 974 827 273
e-mail: polac@polac.cz

Č.j. PA-283-1/ČJ-2015-820000

Praha 27. března 2015
Počet listů: 1

Assoc. Prof. Jiří Drábek, Ph.D.
president
Československá společnost pro
forenzní genetiku
Hněvotínská 937/24
779 00 Olomouc

Konference ISFG 2019 – vyjádření podpory

Vážený pane profesore,

Policejní akademie ČR v Praze doporučuje konání konference ISFG 2019, která se má uskutečnit v Praze, hlavním garantem uvedené problematiky byla určena katedra kriminalistiky.

Vyjadřuji souhlas s uvedením loga Policejní akademie ČR v Praze na připravovaných webových stránkách a prezentačních materiálech konference. Tato možnost byla předběžně telefonicky projednána s Československou společností pro forenzní genetiku (CSSFG).

Další formy případné spolupráce Policejní akademie ČR v Praze a Československé společnosti pro forenzní genetiku (CSSFG) jsou otevřené. Představitelé CSSFG mimo jiné přijali pozvání na konferenci "Pokroky v kriminalistice 2015", kterou pořádá katedra kriminalistiky.

S pozdravem

doc. JUDr. Mgr. Josef Salač, Ph.D.
rektor
schváleno elektronicky



Ústav molekulární genetiky AV ČR, v. v. i.

Prof. Jiří Drábek, PhD.
President, Czechoslovak Society for Forensic Genetics
Hněvotínská 937/24
779 00 Olomouc

Prague, February 16, 2015

Dear Professor Drábek,

The Czech Society for Biochemistry and Molecular Biology (ČSBMB) is very much interested in the ISFG 2019 Congress that your Society is going to organize in Prague. As you may know many members of ČSBMB are involved in studies aiming at forensic applications of molecular genetics. This is why I believe that the Congress will attract a large number of scientists, not only from the Czech Republic and Slovakia but from other Countries as well. Our Society is ready to assist you. We shall inform our members on the event.
We wish you good luck!

With best regards,

Prof. RNDr. Václav Pačes, DrSc.
Chairman, ČSBMB
Kladenská 48
160 00 Prague 6



International Society for Forensic Genetics
Mechthild Prinz
President
John Jay College of Criminal Justice
Dept of Sciences
524 W 59th St.
10019 New York (NY)
United States

Prague, February 6, 2015

Dear Mr. President,

The Czechoslovak Society for Forensic Genetics (CSSFG) will bid for 2019 ISFG congress in Prague, Czech Republic.

I very much support this effort of the Society on behalf of the Czech Medical Association J. E. Purkyně representing almost 90 percent of all medical professionals in our country.

As the ISFG congress has never been held in the Czech Republic yet and 2019 congress should be European I am convinced that CSSFG and Prague are the best candidates. They both have congressional capacities and reputation to organize a very successful event. Forensic geneticists of the whole world will be interested in a scientific program and in cultural heritage of Prague location, of which I am sure.

I am looking forward to welcoming you to Prague!

With kind regards,

Prof. Štěpán Svačina, MD, DSc.
President, Czech Medical Association J.E.Purkyně



JUDICIAL ACADEMY CZECH REPUBLIC

Justiční akademie, Masarykovo nám. 183/15, 767 01 Kroměříž
Tel.: +420 573 505 114, e-mail: sekretariat@akademie.justice.cz

reference number: 2/2015-RED-HLV/25
contact person: Mgr. Filip Glotzmann
telephone: +420 573 505 113
mobile phone: +420 737 247 537
e-mail: fglotzmann@jacz.cz

Assoc. Prof. Jiří Drábek, PhD.
president
Czechoslovak Society for Forensic Genetics
Hněvotínská 937/24
779 00 Olomouc

Kroměříž, 9th February, 2015

Support for initiative to organize ISFG 2019 conference in Prague

Dear Mr. President,

I fully support your initiative to organize congress of International Society for Forensic Genetics (ISFG) in Prague in 2019. This congress would be a great opportunity to present a recent development and success of Czech forensic genetics.

Best Regards,

Filip Glotzmann
Director
Judicial Academy

UNIVERSITY OF CHEMISTRY AND TECHNOLOGY, PRAGUE
Faculty of Food and Biochemical Technology

prof. Tomáš Ruml, MSc, PhD
DEAN

Attn: Assoc. Prof. Jiří Drábek, PhD.
President
Czechoslovak Society for Forensic Genetics
Hněvotínská 937/24
779 00 Olomouc

To whom it may concern,

I strongly support the planned organization of the congress of International Society for Forensic Genetics (ISFG) 2019 in Prague. I am confident that organization of such congress in the Czech Republic will be supported by a broad team of experts and will also meet official support of political representation. Personally, as a person responsible for the only study program "Forensic analysis" in our country, I warmly welcome this intent as it might promote the interest of many talented students in the field.

Sincerely



Společnost lékařské genetiky
České lékařské společnosti J. E. Purkyně

Society of Medical Genetics
Czech Medical Society of J. E. Purkyně

Sokolská 31, 120 26 Praha 2, Czech Republic, tel.: +420 224 266 201-4, fax: +420 224 266 212, e-mail: cls@cls.cz, www.cls.cz

Prague, February 12/2015

Attn: Assoc. Prof. Jiří Drábek, PhD.
President
Czechoslovak Society for Forensic Genetics
Hněvotínská 937/24
779 00 Olomouc
tel: +420 776 150 344
e-mail: jiri.drabek@upol.cz
www.cssfg.org

Ref. Endorsement of the Czech Society of Medical Genetics for the bid of the Czechoslovak Society for Forensic Genetics for the organisation of the International Society for Forensic Genetics (ISFG) congress in 2019 in Prague.

To Whom It May Concern,

The Executive board of our Society fully endorses the bid of our partnership professional society – the Czechoslovak Society for Forensic Genetics (CSSFG, www.cssfg.org), which together with the congress organization agency C-IN (<http://www.c-in.eu/>), intends to organize the congress of International Society for Forensic Genetics (ISFG) in the Czech Republic in 2019.

It should be noted that the ISFG congress was never held before in the Czech Republic and that our country could provide all the necessary organizational, professional and social / cultural aspects for such a prestigious meeting in Prague, and beyond.

Sincerely,

SPOLEČNOST LÉKAŘSKÉ GENETIKY
České lékařské společnosti
J. E. Purkyně

Prof. MUDr. Milan Macek MD, DSc
President



Jiri Drabek <drabekjiri@gmail.com>

zadost o vyjádření podpory organizování konference

Miller Jaroslav <jaroslav.miller@upol.cz>
Komu: Jiri Drabek <drabekjiri@gmail.com>

5. února 2015 8:44

On behalf of Palacký University, Olomouc I strongly support the idea of CSSFG congress to be held in Prague.
All the best
Jaroslav Miller

prof. Mgr. Jaroslav Miller, M.A., Ph.D.
Rektor
Rektor

Univerzita Palackého v Olomouci
Palacký University Olomouc | Czech Republic
+420 585 631 001 | +420 730 844 544
rektor@upol.cz | www.upol.cz

Od: Jiri Drabek [drabekjiri@gmail.com]

Odesláno: 5. února 2015 8:41

Komu: Miller Jaroslav

Předmět: Re: zadost o vyjádření podpory organizování konference

[Citovaný text byl skryt]



UNIVERSITAS CAROLINA
PRAGENSIS

Rector

Prague, February 27, 2015

Dear Professor Drábek,

Thank you for your letter announcing that your Society would like to organize congress of the International Society for Forensic Genetics which would be held in Prague in 2019. This is an excellent idea because Prague is widely known not only for its historical heritage but also as the international city of scientific congresses. I believe that such prestigious event would increase cooperation between scientists from different parts of the world and that all participants will be satisfied.

I strongly support decision to make Prague as a venue of the International Congress in Forensic Genetics in 2019.

Yours sincerely,

Prof. Tomáš Zima, MD, DSc.

Assoc. Prof. Jiří Drábek, Ph.D.
President
Czechoslovak Society for Forensic Genetics
Hněvotínská 937/24
779 00 Olomouc

Ovocný trh 3/5, 116 36 Prague 1, Czech Republic
phone: (+420 2) 2449 1313-5
e-mail: rector@cuni.cz, http://www.cuni.cz